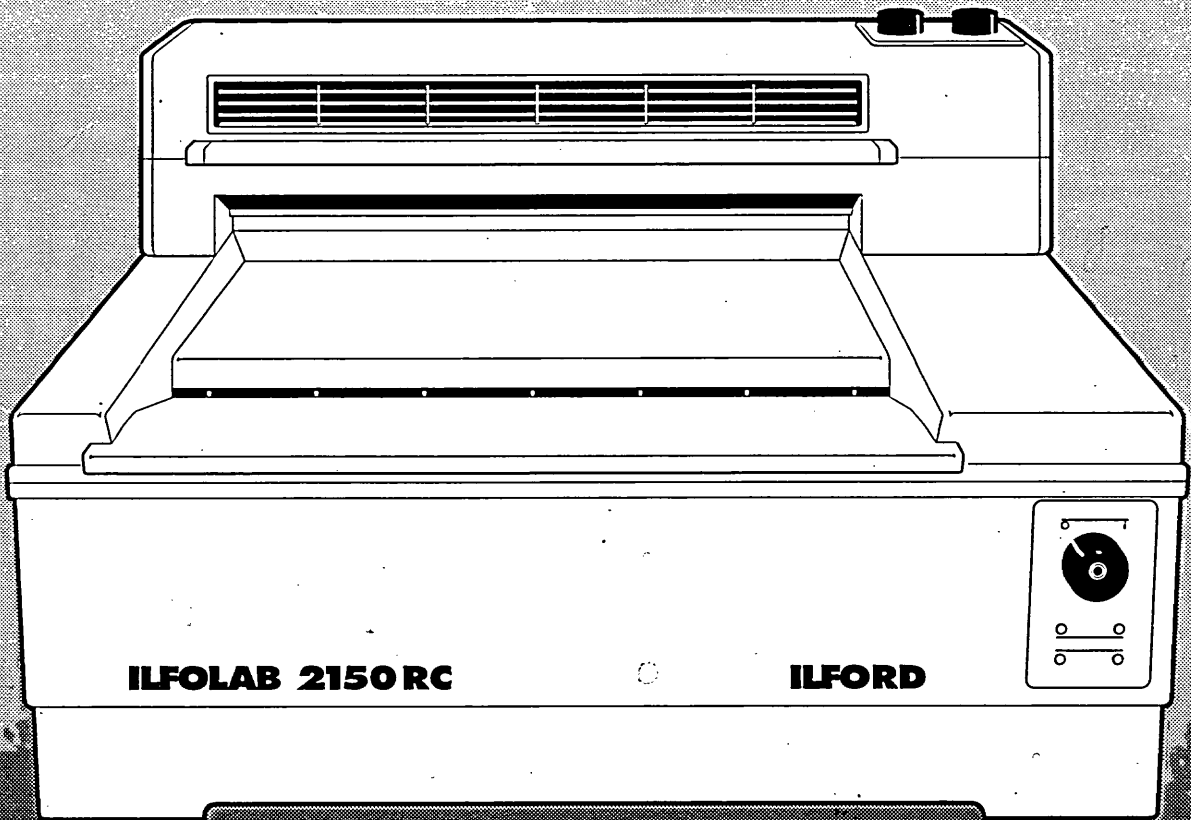


50/60Hz

ILFORD
SERVICE INFORMATION

ILFOLAB
2150RC

TABLE TOP AUTOMATIC PROCESSING
SYSTEM FOR HIGH QUALITY BLACK
AND WHITE PRINT MAKING



CONTENTS

	APPROVED ABBREVIATIONS	3
1	PARTS LIST	4
2	ELECTRICAL	40

APPROVED ABBREVIATIONS

The following is a list of abbreviations used on the parts list and circuit diagrams:

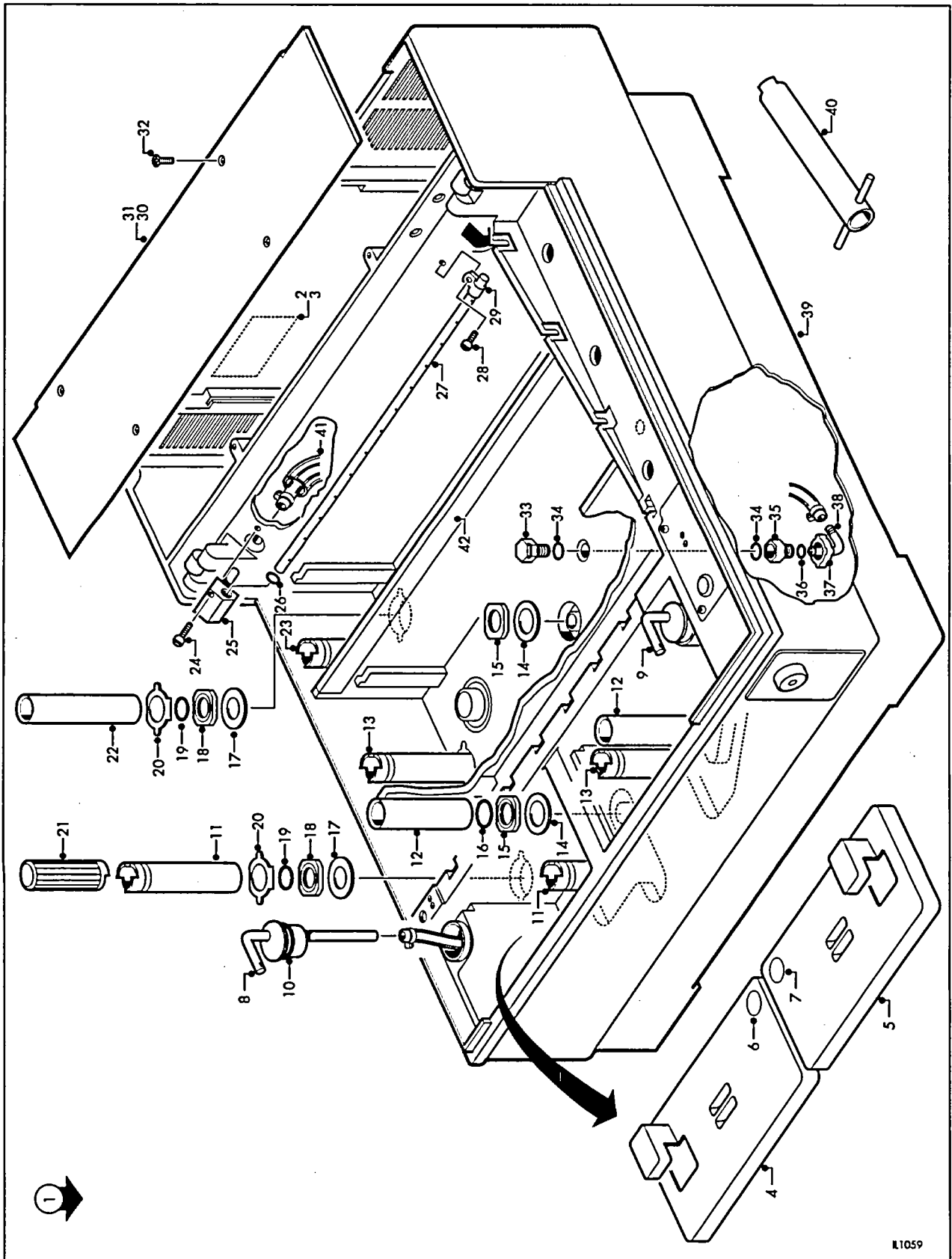
Abbreviation	Word(s) in full
AR	as required
assy	assembly
CT	control, temperature
csk hd	countersunk head
dev	developer
d	diameter
fig	figure
fix	fixer
flex hose	flexible hose
hex head	hexagonal head
id	inside diameter
lh	left hand
LED	light emitting diode
no.	number
od	outside diameter
oflow	overflow
phd	pan head
PCB	printed circuit board
RL	relay
rep	replenishment
rh	right hand
stap	self tapping
sproof	shakeproof
ss	stainless steel
SW	switch
T	teeth
temp	temperature
TB	terminal block

1

PARTS LIST

When ordering spare parts, please quote the correct part number in order that ILFORD Limited can process your order as quickly and efficiently as possible.

Figure	Description	
1.1	ILFOLAB 2150RC processor upper (1)	5
1.2	ILFOLAB 2150RC processor upper (2)	7
1.3	ILFOLAB 2150RC processor lower (1)	9
1.4	ILFOLAB 2150RC processor lower (2)	11
1.5	ILFOLAB 2150RC processor lid	13
1.6	ILFOLAB 2150RC drive assembly	15
1.7	ILFOLAB 2150RC dev rack assembly	17
1.8	ILFOLAB 2150RC fix rack assembly	19
1.9	ILFOLAB 2150RC wash rack assembly	21
1.10	ILFOLAB 2150RC electrics	23
1.11	ILFOLAB 2150RC optional equipment	27
1.12	ILFOLAB 2150RC dryer module - body upper	29
1.13	ILFOLAB 2150RC dryer module - body lower	31
1.14	ILFOLAB 2150RC dryer module - moving parts	35
1.15	ILFOLAB 2150RC dryer module - moving parts	37



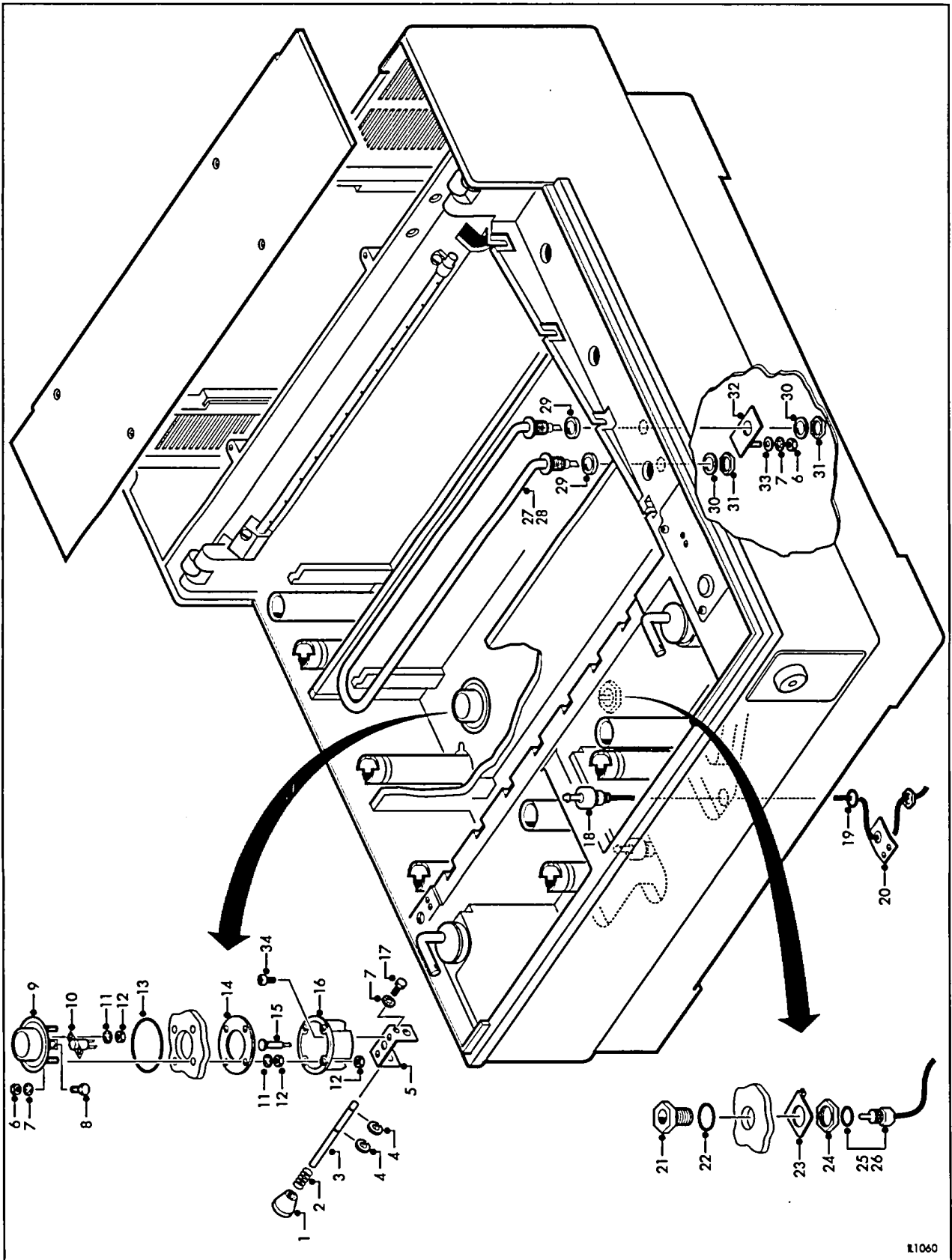
IL1059

Figure 1.1

ILFOLAB 2150RC processor upper (1)

1.1 ILFOLAB 2150RC processor upper (1)

Ref no. fig 1.1	Part no.	GIN No.	Description	Quantity	Serial no.
1	6215-P-001		Processor, complete	1	
2	6215-3-106		Serial no./rating label, 240V	1	
3	6215-3-107		Serial no./rating label, 120V	1	
4	6171-4-058	1571570	Front dev tank cover, complete	1	
5	6171-4-059	1571589	Front fix tank cover, complete	1	
6	6171-4-256		lid label, dev	1	
7	6171-4-257		lid label, fix	1	
8	6171-P-037	1555198	Water feed pipe, dev	1	
9	6171-P-038	1555208	Water feed pipe, fix	1	
10	86408225	1560426	'O' ring, 30mm id	2	
11	6171-4-150	1555336	Overflow and drain pipe, dev	2	
12	6171-4-152	1555354	Transfer pipe dev	2	
13	6171-4-151	1555345	Overflow and drain pipe, fix	2	
14	6171-4-161	1555446	Gasket sealing washer, 3/4 inch	4	
15	6171-4-156	1555390	Pipe nut, 3/4 inch BSP	4	
16	86408226	1560437	'O' ring, 27mm id	4	
17	6171-4-160	1555437	Gasket sealing washer, 1/2 inch	6	
18	6171-4-155	1555381	Pipe nut, 1/2 inch BSP	6	
19	86408230	1560479	'O' ring, 22mm id	6	
20	6171-4-157	1555400	Pipe nut lock washer	6	
21	6171-4-158	1555419	Standpipe key	1	
22	6171-4-154	1555372	Overflow pipe, wash water	1	
23	6171-4-153	1555363	Drain standpipe, wash water	1	
24	87988995		Screw, M4x30mm, phd	1	
25	6171-4-265	1571778	Spray bar socket	1	
26	86408231	1582589	'O' ring, spray bar	1	
27	6171-4-264	1571767	Spray bar	1	
28	87988992		Screw, M4x16mm, phd	1	
29	81334715	1493690	'P' clip	1	
30	6171-4-062	1571598	Rear cover, 240V	1	
31	6171-4-63		Rear cover, 120V	1	
32	87990679		Screw, M4x10mm, csk hd	4	
33	6171-4-224	1571646	Recirculation nozzle	4	
34	86408220	1560387	'O' ring, 11mm id	8	
35	6171-4-250	1571734	Pipe adaptor	4	
36	86408222	1560404	'O' ring, 1.8x11mm id	4	
37	20.004096	1427882	Locking ring	4	
38	30.004094	1571679	Elbow, 90°	4	
39	6171-0-100		Processor body	1	
40	6171-3-223	1563054	Pipe spanner	1	
41	6171-4-270		Hose conduit	1	
42	6171-4-278	1604267	Wall stiffener		



R1060

Figure 1.2

ILFOLAB 2150RC processor upper (2)

1.2 ILFOLAB 2150RC processor upper (2)

Ref no. fig 1.2	Part no.	GIN No.	Description	Quantity	Serial no.
1	6171-4-247	1571701	Thermal cut-out reset cone	2	
2	20.510005	1450657	Spring	2	
3	6171-4-248	1571712	Thermal cut-out push rod	2	
4	81323001	1492808	Circlip	2	
5	6171-4-249	1571723	Thermal cut-out reset bracket	2	
6	86204066	1471388	Nut, M4	5	
7	89730601	1473377	Washer, M4, sproof	6	
8	87990113		Screw, M4x10mm, phd	2	
9	20.011543	1550157	Thermal cut-out housing	2	
10	20.011541	1482128	Thermal cut-out (SW3, SW4)	2	
11	89730600	1702240	Washer, M3, sproof	4	
12	86204065		Nut, M3	4	
13	20.011544	1550166	'O' ring, 51mm id	2	
14	20.011542	1578977	Shoulder ring	2	
15	20.012158	1550184	Reset button	2	
16	20.012157	1550175	Housing	2	
17	87993331		Screw, M4x8mm, hex hd	2	
18	6171-P-054	1560668	Float switch (SW6,SW7)	2	
19	86408227	1560448	'O' ring, 12mm id	2	
20	6171-4-212		Float switch plate	2	
21	00.016810	1556830	Housing, solution temp probe	1	
22	86408229	1560460	'O' ring, 27mm id	1	
23	6171-4-211	1702222	Probe ring	1	
24	00.016809	1550120	Nut, plastic, 3/4 inch	1	
25	30.007899	1429899	Temperature probe, 240V (R1)	1	
26	6171-4-021	1555116	Temperature probe, 120V (R1)	1	
27	6171-3-107	1554997	Heater, 800W, 240V (H1, H2)	2	
28	6171-3-108		Heater 800W, 120V (H1, H2)	2	
29	6171-4-215	1555491	Gasket, heater	4	
30	6171-4-277	1709656	Washer, heater	2	
31	86204520	1493920	Nut, 1/4 inch BSP, heater	4	
32	6171-4-244	1812992	Heater earth plate	2	
33	89730467	1471498	Washer, M4, plain	7	
34	87988989		Screw, M4x8mm, phd	2	

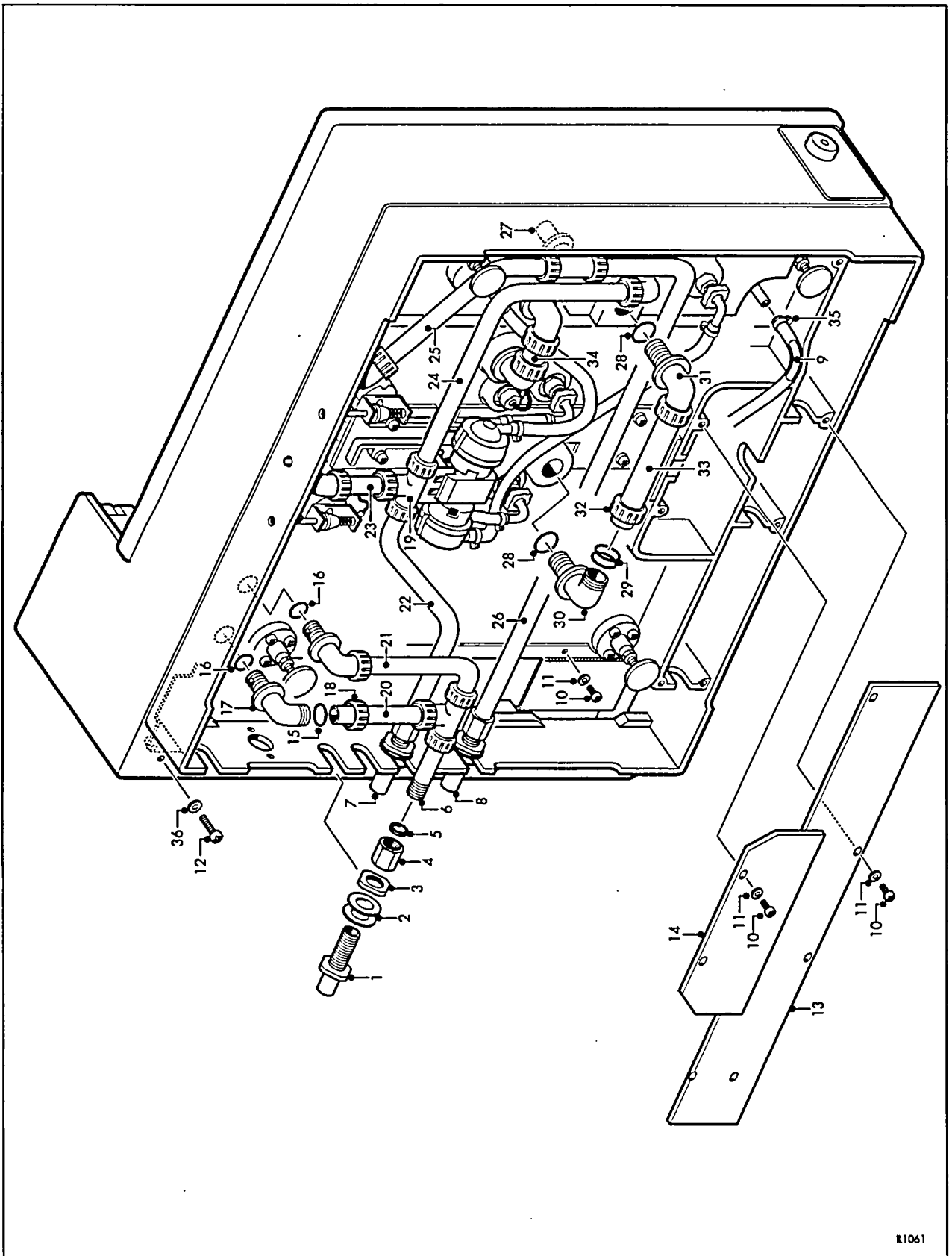


Figure 1.3

ILFOLAB 2150RC processor lower (1)

K1061

1.3 ILFOLAB 2150RC processor lower (1)

Ref no. fig 1.3	Part no.	GIN No.	Description	Quantity	Serial no.
1	6171-4-298	1601958	Drain spigot, wash	1	from 2C52726
2	6171-4-160	1555437	Gasket sealing washer, 1/2 inch	6	
3	6171-4-155	1555381	Pipe nut, 1/2 inch BSP	3	
4	6171-4-301	1430019	Pipe connector, 1/2 inch BSP	3	from 2C52126
5	6171-4-302	1601985	Washer, fibre, 1/2 inch	3	from 2C52126
6	6171-4-306	1602003	Drain pipe, wash water	1	from 2C52726
7	6171-4-299	1601967	Drain spigot, fix	1	from 2C52126
8	6171-4-300	1601976	Drain spigot, dev	1	from C521269
9	20.490040	1428937	Pipe elbow, 90°	2	
10	87988989		Screw, M4x8mm, phd	18	
11	89730467	1471498	Washer, M4, plain	16	
12	87990142		Screw, M6x16mm, phd	1	
13	6171-3-279		Cover base, rh	1	
14	6171-3-146		Cover, heater contact	1	
15	20.006739	1498347	'O' ring, drain pipe	13	from 2C52126
16	86408221	1560396	'O' ring, 21mm id	6	
17	6171-4-283	1601875	Drain elbow, 1/2 inch	5	from 2C52126
18	6171-4-296	1601930	Compression nut, 1/2 inch	13	from 2C52126
19	6171-4-284	1621657	Drain tee, 1/2 inch	2	from 2C52726
20	6171-4-305	1601994	Drain pipe, wash water overflow	1	from 2C52726
21	6171-3-291	1601857	Drain pipe, wash water	1	from 2C52726
22	6171-2-293	1601820	Drain pipe, fix	1	from 2C52726
23	6171-4-289	1601907	Pipe straight, fix	1	from 2C52726
24	6171-3-290	1601848	Pipe, fix	1	from 2C52726
25	6171-3-288	1601839	Pipe, dev	1	from 2C52126
26	6171-3-292	1601866	Drain pipe, dev	1	from 2C52126
27	6171-P-287	1620676	Drain tee assy, dev, 1/2 inch	1	from 2C52126
			Comprises of the following items:		
	6171-4-332		Drain tee, dev, 1/2 inch	1	
	6171-4-304		Tank spigot, dev, front tank	1	
	86408221		'O' ring, 21mm id	1	
28	86408226	1560437	'O' ring, 27mm id	4	
29	86408233	1630475	'O' ring, transfer pipe	8	from 2C52126
30	6171-4-286	1601893	Drain elbow, 3/4 inch, rear	2	from 2C52126
31	6171-4-285	1601884	Drain elbow, 3/4 inch, front	2	from 2C52126
32	6171-4-297	1601949	Compression nut, 3/4 inch	4	from 2C52126
33	6171-4-294	1601918	Transfer pipe, fix	1	from 2C52126
34	6171-4-295	1601929	Transfer pipe, dev	1	from 2C52126
35	81334733	1554838	Hose clip	14	
36	89730469		Washer, M6, plain	1	

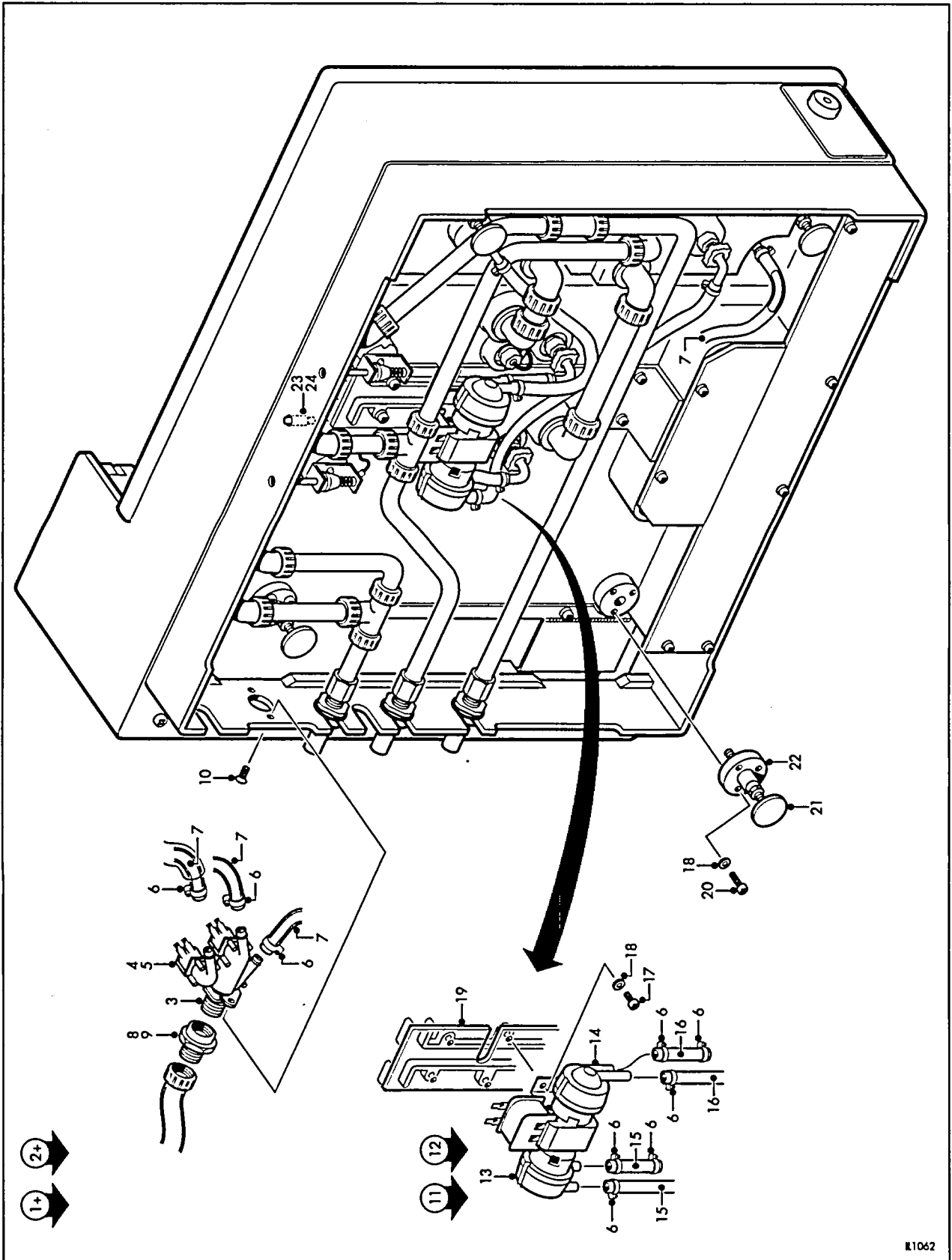


Figure 1.4

ILFOLAB 2150RC processor lower (2)

1.4 ILFOLAB 2150RC processor lower (2)

Ref no. fig 1.4	Part no.	GIN No.	Description	Quantity	Serial no.
1+	6171-P-060	1571460	Processor kit, 240V Comprises the following items:	1	
	6120-3-135		Bearing, 5mm	4	
	6171-4-118		Guide mounting block	3	
	6171-4-120		Roller spring, rh	3	
	6171-4-127		Roller spring, lh	3	
	6171-4-158		Standpipe key	1	
	83421236		Fuse, 8A - 240V	1	
	86408230		'O' ring, 22mm id	5	
2+	6171-3-061		Processor kit, 120V Comprises the following items:	1	
	6120-3-135		Bearing, 5mm	4	
	6171-4-118		Guide mounting block	3	
	6171-4-120		Roller spring, rh	3	
	6171-4-127		Roller spring, lh	3	
	6171-4-158		Standpipe key	1	
	83421236		Fuse, 15A - 120V	1	
	86408230		'O' ring, 22mm id	5	
3	87999607	1571855	Valve assy, triple solenoid	1	
4	87999606	1626230	Solenoid flow restrictor	3	
5	87999608		Solenoid	3	
6	81334733	1554838	Hose clip	14	
7	86620523	1560723	Hose, clear	1	
8	6121-4-323	1520383	Adaptor, solenoid	1	
9	86408238		'O' ring, solenoid adaptor	1	
10	87990680		Screw, M4x12mm, csk hd	2	
11	86614504	1560497	Pump, 24V (P1)	1	
12	86614505	1560503	Pump, 24V - 60Hz (P1)	1	
13	86614506	1582598	Pump head, rh (fix)	1	
14	86614507	1582602	Pump head, lh (dev)	1	
15	86620522	1560712	Hose, green	2	
16	86620521	1560701	Hose, red	2	
17	87988989		Screw, M4x8mm, phd	18	
18	89730467	1471498	Washer, M4, plain	16	
19	6171-3-147		Cover, thermostat cable	1	
20	87988993		Screw, M4x20mm, phd	12	
21	6171-4-234	1586738	Foot mounting	4	
22	10.009326	1580479	Levelling foot pad	4	
23	6171-4-272	1633775	Neon, thermal cut-out, 220/240V(L5)	1	
24	6171-4-273		Neon, thermal cut-out, 120V (L5)	1	

+ items not illustrated

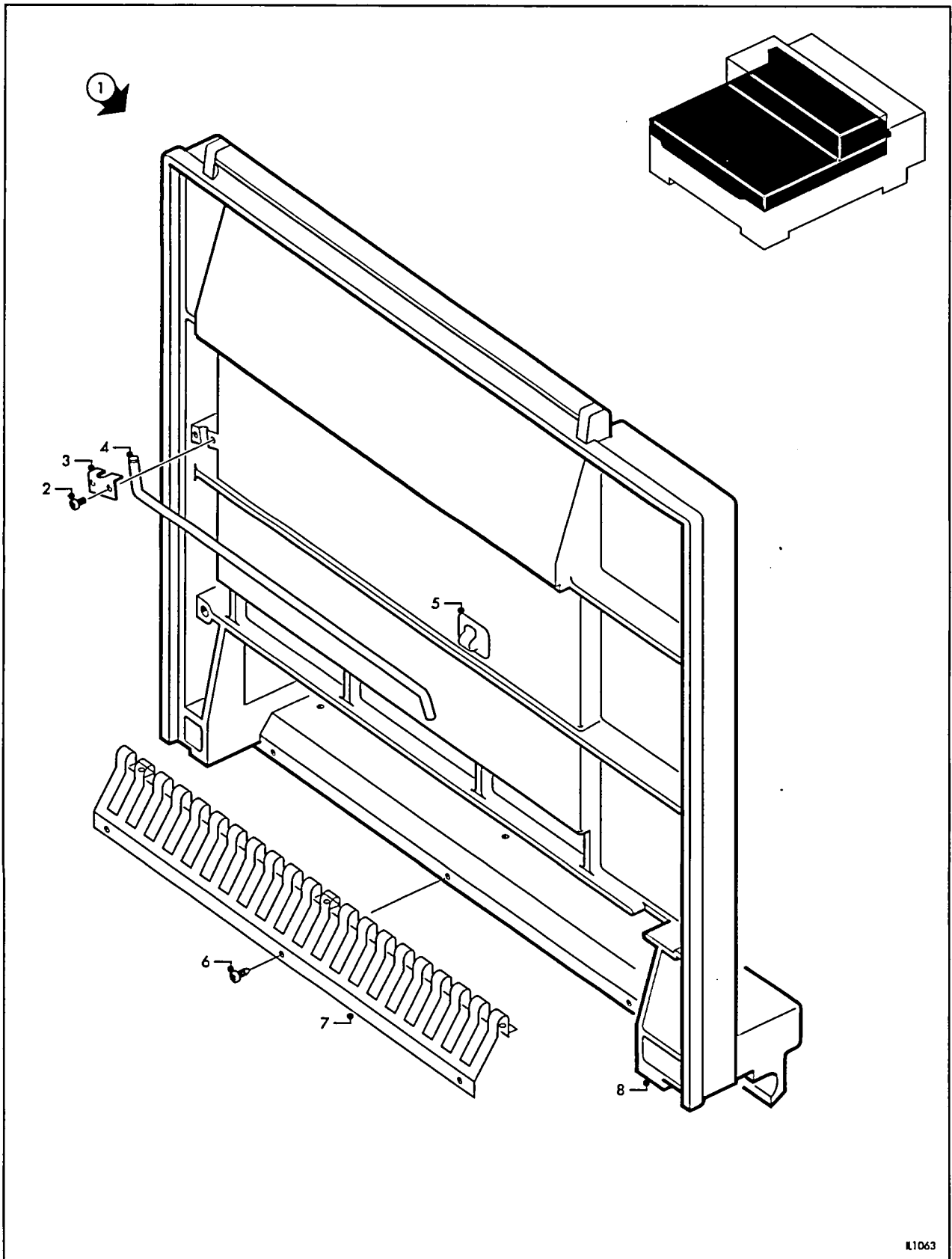
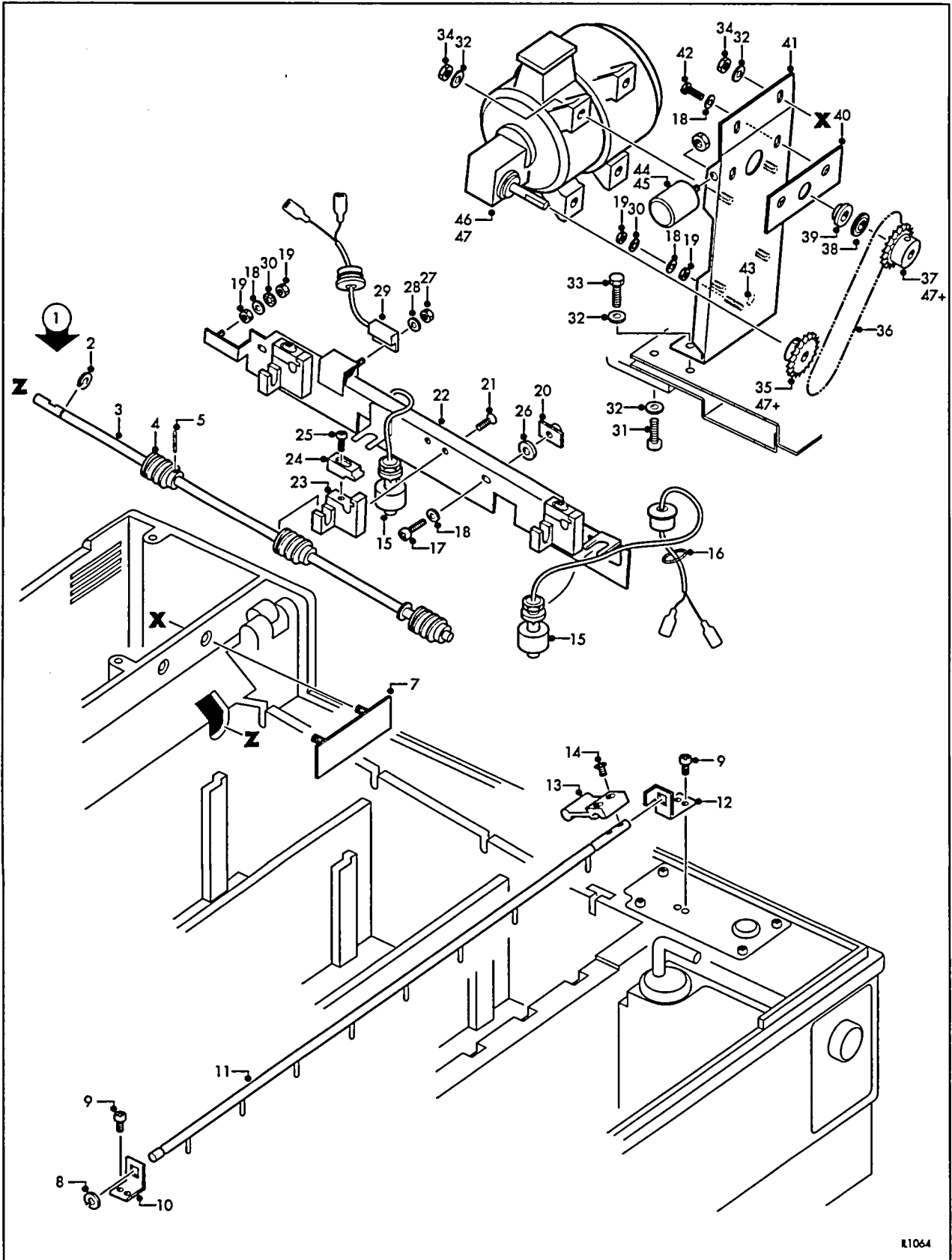


Figure 1.5

ILFOLAB 2150RC processor lid

		1.5	ILFOLAB 2150RC processor lid		
Ref no. fig 1.5	Part no.	GIN No.	Description	Quantity	Serial no.
1	6171-P-043	1554869	Cover assy	1	
2	87988989		Screw, M4x8mm, phd	2	
3	6171-4-221	1571635	Retainer, lid support	1	
4	6121-4-222	1540659	Lid support	1	
5	6171-4-220	1555509	Clip, lid support	1	
6	87991657		Screw, No.8x ³ / ₈ inch, phd, stap	6	
7	6171-2-132	1554915	Guide, paper exit	1	
8	6171-3-106	1554869	Cover	1	



R1064

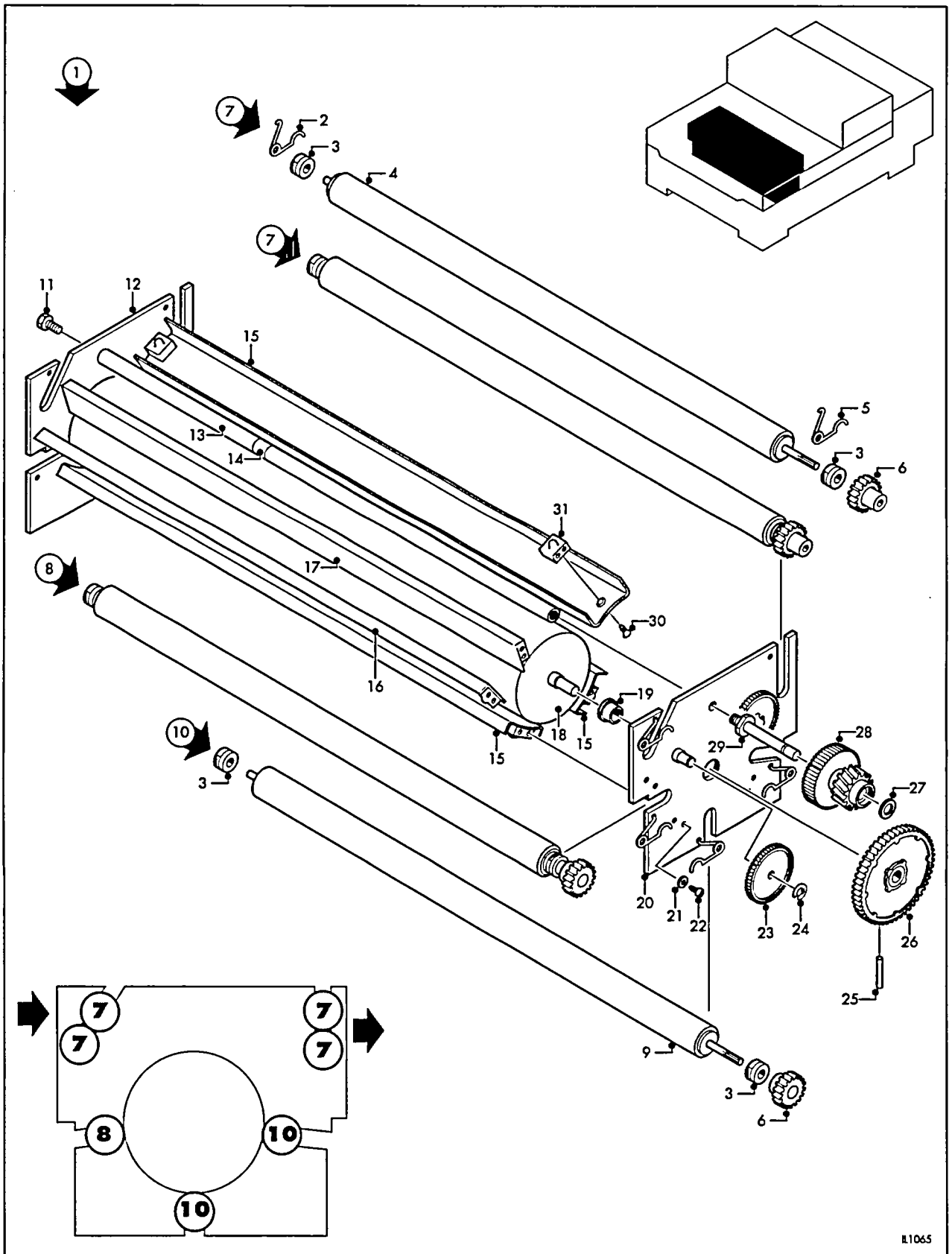
Figure 1.6

ILFOLAB 2150RC processor - drive assembly

1.6 ILFOLAB 2150RC processor - drive assembly

Ref no. fig 1.6	Part no.	GIN No.	Description	Quantity	Serial no.
1	6171-3-014	1554948	Layshaft assy	1	
2	81323002	1492798	Circlip, ⁵ / ₁₆ inch, external	2	
3	6171-3-014	1554948	Layshaft	1	
4	6171-4-124		Worm	3	
5	87997620	1723544	Pin, 2.5x14mm long	3	
6+	87993154		Set screw, M5x8mm	2	
7	6171-4-349		Stud plate	1	
8	81323001	1492808	Circlip, detector bar	1	
9	87990113		Screw, M4x10mm, phd	8	
10	6171-4-141	1555327	Bracket, paper detector, lh	1	
11	6171-4-044	1555244	Shaft assy, paper detector	1	
12	6171-4-140	1555318	Bracket, paper detector, rh	1	
13	6171-4-045	1555253	Magnet assy, paper detector	1	
14	87990678		Screw, M4x8mm, csk hd	2	
15	6171-3-053	1560657	Float switch (SW8, SW9)	2	
16	86408223	1560488	'O' ring, 15mm id	3	
17	87990117		Screw, M4x25mm, phd	4	
18	89730467	1471498	Washer, M4, plain	18	
19	86204065		Nut, M3	4	
20	6171-4-057	1571569	Anchor nut, layshaft bracket	4	
21	87990679		Screw, M4x10mm, csk hd	6	
22	6171-2-016		Bracket, layshaft	1	
23	6120-3-300	1492996	Bearing block, layshaft	3	
24	6171-4-199	1560699	Shaft retainer	3	
25	87988992		Screw, M4x16mm, phd	3	
26	6171-4-136	1571624	Spacer, layshaft bracket	4	
27	86204065		Nut, M3	2	
28	89730466		Washer, M3, plain	2	
29	6171-4-042	1555226	Reed switch, lid interlock (SW2)	1	
30	89730601	1473377	Washer, M4, sproof	6	
31	87990143		Screw, M6x20mm, phd	2	
32	89730469		Washer, M6, plain	6	
33	87993362		Screw, M6x16mm, hex hd	2	
34	86204068		Nut, M6	2	
35	6171-4-343	1761146	Motor sprocket, 21T	1	
36	81324517	1761164	Chain, 6mm pitch, 63 links	1	
37	6171-4-342	1761137	Layshaft sprocket, 19T	1	
38	6171-4-028	1555134	Thrust bearing assy	1	
39	6171-4-340	1761119	Layshaft bearing	1	
40	6171-4-341	1761128	Layshaft bearing plate	1	
41	6171-2-339	1761155	Motor bracket	1	
42	87993332		Screw, M4x10, hex hd	2	
43	6171-4-274		Earth label	2	
44	81334958	1820818	Capacitor, 50Hz	1	
45	81334959	1820829	Capacitor, 60Hz	1	
46	85657522	1746277	Motor Parvalux 50Hz 90 rpm, 240V	1	
47	85657523	1747799	Motor Parvalux 60Hz 92 rpm, 120V	1	

+ items not illustrated



B1065

Figure 1.7

ILFOLAB 2150RC processor - developer rack assembly

1.7 ILFOLAB 2150RC processor - dev rack assembly

Ref no. fig 1.7	Part no.	GIN No.	Description	Quantity	Serial no.
1	6171-0-002	1577262	Developer rack assy, complete	1	
2	6171-4-127	1555299	Roller spring, lh	5	
3	6120-3-135	<u>1492952</u>	Shaft bearing, 5mm	14	
4	6121-3-005		Roller, rubber	5	
5	6171-4-120	1555271	Roller spring, rh	5	
6	6121-4-239	1495526	Gear, 19T	7	
7	6121-P-085	1493623	Roller assy, rubber, 19mm od comprising items 3,4,6	4	
8	6171-P-013	1571547	Roller assy, rubber, 19mm od comprising items 3,4,6	1	
9	6171-3-029	1702781	Roller, PVC	2	
10	6171-P-012	1571536	Roller assy, PVC, 19mm d comprising items 3,6,9	2	
11	87993361		Screw, M6x12mm, hex hd	1	
12	6171-2-110	1571396	End plate, lh	1	
13	6171-4-130	1597228	Rack spacer	1	
14	6171-4-217		Identity ring, red	1	
15	6171-3-113	1555015	Guide A, paper	3	
16	6171-3-115	1555033	Guide C, paper	1	
17	6171-3-114	1555024	Guide B, paper	1	
18	6171-2-005	1554887	Drum assy	1	
19	6120-4-138	1493018	Shaft bearing, 10mm	2	
20	6171-3-007	1571437	End plate, rh	1	
21			Washer, M4, plain	20	
22	87991688	1571844	Screw, No.8x ³ / ₈ inch, stap, phd	20	
23	6121-3-242	1495469	Idler gear, 45T	2	
24	81323001	1492808	'E' clip	2	
25	87997613	1495890	Spirol pin, 2mmx20mm long	1	
26	6121-3-243	1540527	Gear, 72T	1	
27	6171-4-131	1555309	Washer, retaining	1	
28	6171-P-006	1555088	Worm wheel/gear, 14-45T	1	
29	6171-4-119	1571613	Idler shaft, input	1	
30	87991673	1571833	Screw, No.8x ³ / ₈ inch, stap, csk hd	10	
31	6171-4-118	1555262	Guide mounting block	10	

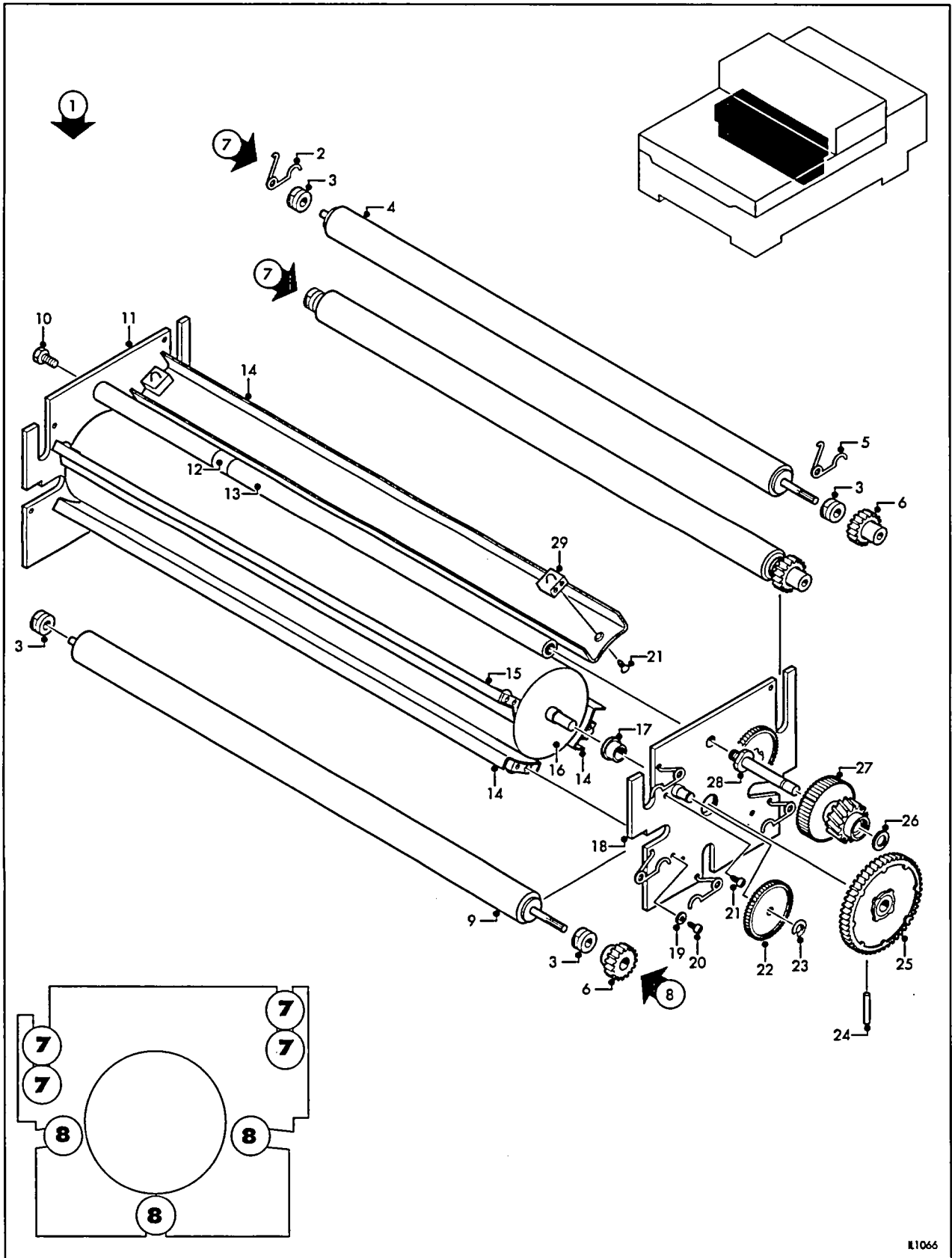


Figure 1.8

ILFOLAB 2150RC processor - fixer rack assembly

1.8 ILFOLAB 2150RC processor - fixer rack assembly

Ref no. fig 1.8	Part no.	GIN No.	Description	Quantity	Serial no.
1	6171-0-003	1577271	Fixer rack assy, complete	1	
2	6171-4-127	1555299	Roller spring, lh	5	
3	6120-3-135	1492952	Shaft bearing, 5mm	14	
4	6121-4-085	1493623	Roller, rubber	4	
5	6171-4-120	1555271	Roller spring, rh	5	
6	6121-4-239	1495526	Gear, 19T	3	
7	6121-3-005		Roller assy, rubber, 19mm od comprising items 3,4,6	4	
8	6171-4-012	1571536	Roller assy, PVC, 19mm od comprising items 3,6,9	3	
9	6171-3-029	1702781	Roller, PVC	3	
10	87993361		Screw, M6x12mm, hex hd	1	
11	6171-2-121	1571415	End plate, lh	1	
12	6171-4-218		Identity ring, green	1	
13	6171-4-130	1597228	Rack spacer	1	
14	6171-3-113	1555015	Guide A, paper	3	
15	6171-3-116	1555042	Guide D, paper	1	
16	6171-2-005	1554887	Drum assy	1	
17	6120-4-138	1493018	Shaft bearing, 10mm	2	
18	6171-3-008	1571448	End plate, rh	1	
19			Washer, M4, plain	16	
20	87991688	1571844	Screw, No.8x ³ / ₈ inch, stap, phd	16	
21	87991673	1571833	Screw, No.8x ³ / ₈ inch, stap, csk hd	8	
22	6121-3-242	1495469	Idler gear, 45T	2	
23	81323001	1492808	'E' clip	2	
24	87997613	1495890	Spirol pin, 2mmx20mm long	1	
25	6121-3-243	1540527	Gear, 72T	1	
26	6171-4-131	1555309	Retaining washer	1	
27	6171-4-006	1555088	Worm wheel/gear, 14-45T	1	
28	6171-4-119	1571613	Idler shaft, input	1	
29	6171-4-118	1555262	Guide mounting block	8	

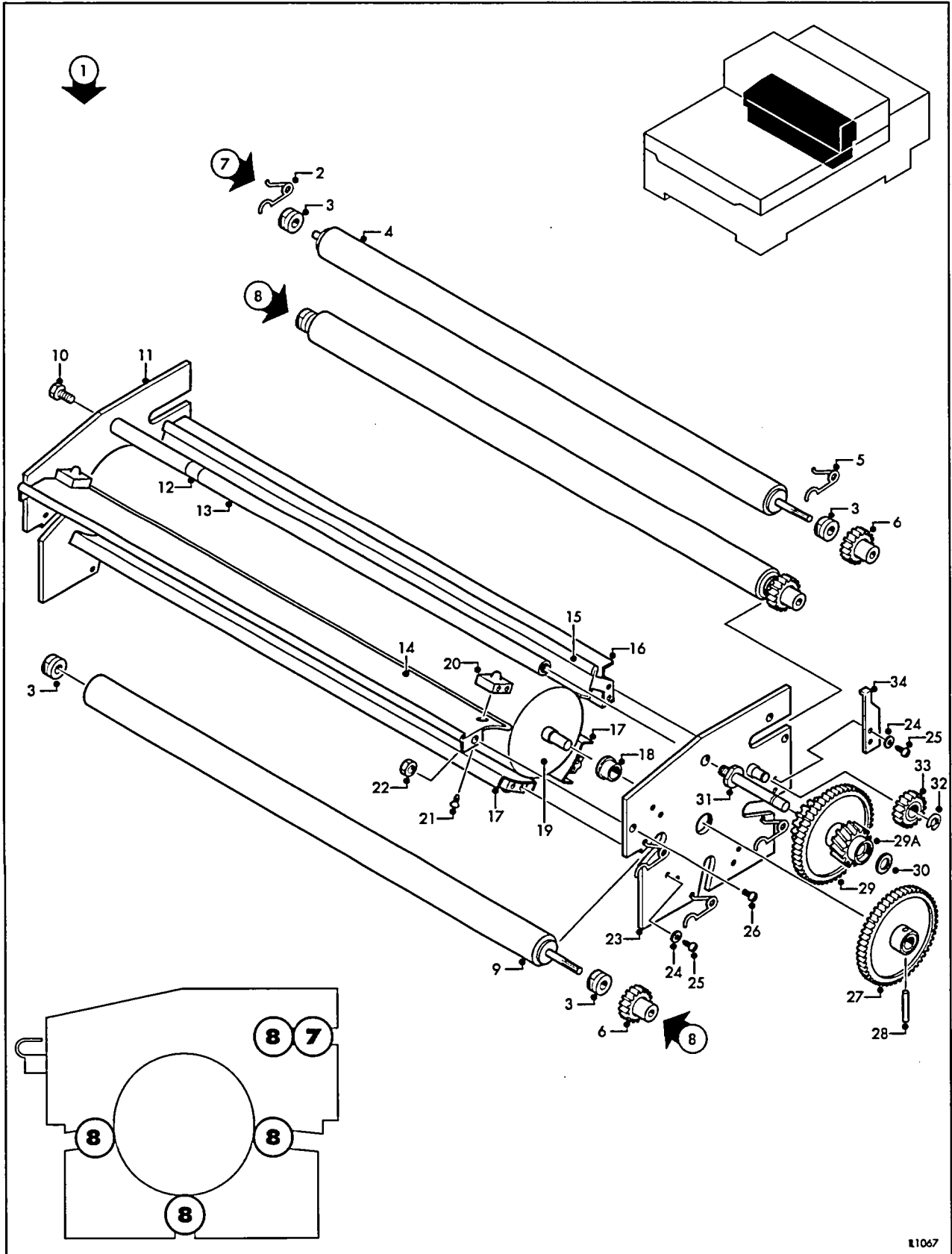


Figure 1.9

ILFOLAB 2150RC processor - wash rack assembly

1.9 ILFOLAB 2150RC processor - wash rack assembly

Ref no. fig 1.9	Part no.	GIN No.	Description	Quantity	Serial no.
1	6171-0-004	1577280	Wash rack assy, complete	1	
2	6171-4-127	1555299	Roller spring, lh	4	
3	6120-3-135	1492952	Shaft bearing, 5mm	10	
4	6121-3-005		Roller, rubber	1	
5	6171-4-120	1555271	Roller spring, rh	4	
6	6121-4-239	1495526	Gear, 19T	5	
7	6121-4-085	1493623	Roller assy, rubber, comprising items 3,4,6	1	
8	6171-P-017	1571558	Roller assy, PVC comprising items 3,6,9	4	
9	6171-3-029	1702781	Roller, PVC	4	
10	87993361		Screw, M6x12mm, hex hd	1	
11	6171-2-112	1571404	End plate, lh	1	
12	6171-4-219		Identity ring, white	1	
13	6171-4-331	1597228	Rack spacer	1	from 2C52880
14	6171-3-129	1555060	Guide E, paper	1	
15	6171-3-117	1571514	Guide F, paper	1	
16	6171-3-123	1571525	Guide G, paper	1	
17	6171-3-113	1555015	Guide A, paper	2	
18	6120-4-138	1493018	Shaft bearing, 10mm	2	
19	6171-2-005	1554887	Drum assy	1	
20	6171-4-118	1555262	Guide mounting block	8	
21	87991673	1571833	Screw, No.8x ³ / ₈ inch, stap, csk hd	8	
22	86204065		Nut, M3	2	
23	6171-P-009	1571459	End plate, rh	1	
24			Washer, M4, plain	16	
25	87991688	1571844	Screw, No.8x ³ / ₈ inch, stap, phd	16	
26	87990083		Screw, M3x5mm, phd	2	
27	6121-3-243	1540527	Gear, 72T	1	
28	87997613	1495890	Spirol pin, 2mmx20mm long	1	
29	6171-4-010	1555097	Worm wheel/gear, 45-72T assy	1	upto 2C52879
	6171-4-088		Worm wheel/gear, 45-72T	1	from 2C52880
29A	6171-4-330		Worm wheel	1	from 2C52880
30	6171-4-131	1555309	Retaining washer	1	
31	6171-4-119	1571613	Idler shaft, input	1	
32	81323001	1492808	'E' clip	1	
33	6121-4-240	1495537	Idler gear, 19T	1	
34	6171-4-225	1571657	Gear retaining plate	1	

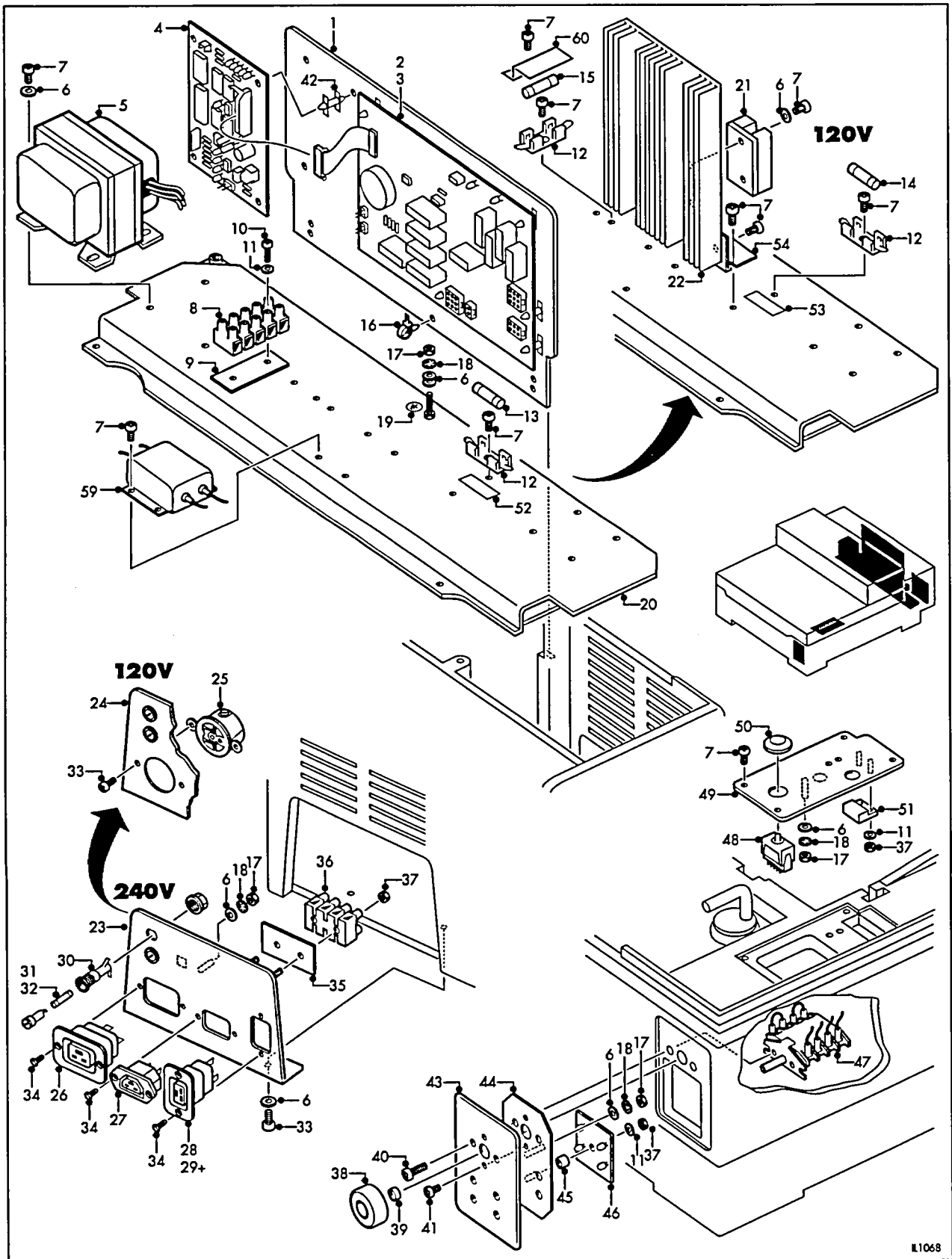


Figure 1.10

ILFOLAB 2150RC processor - electrical components

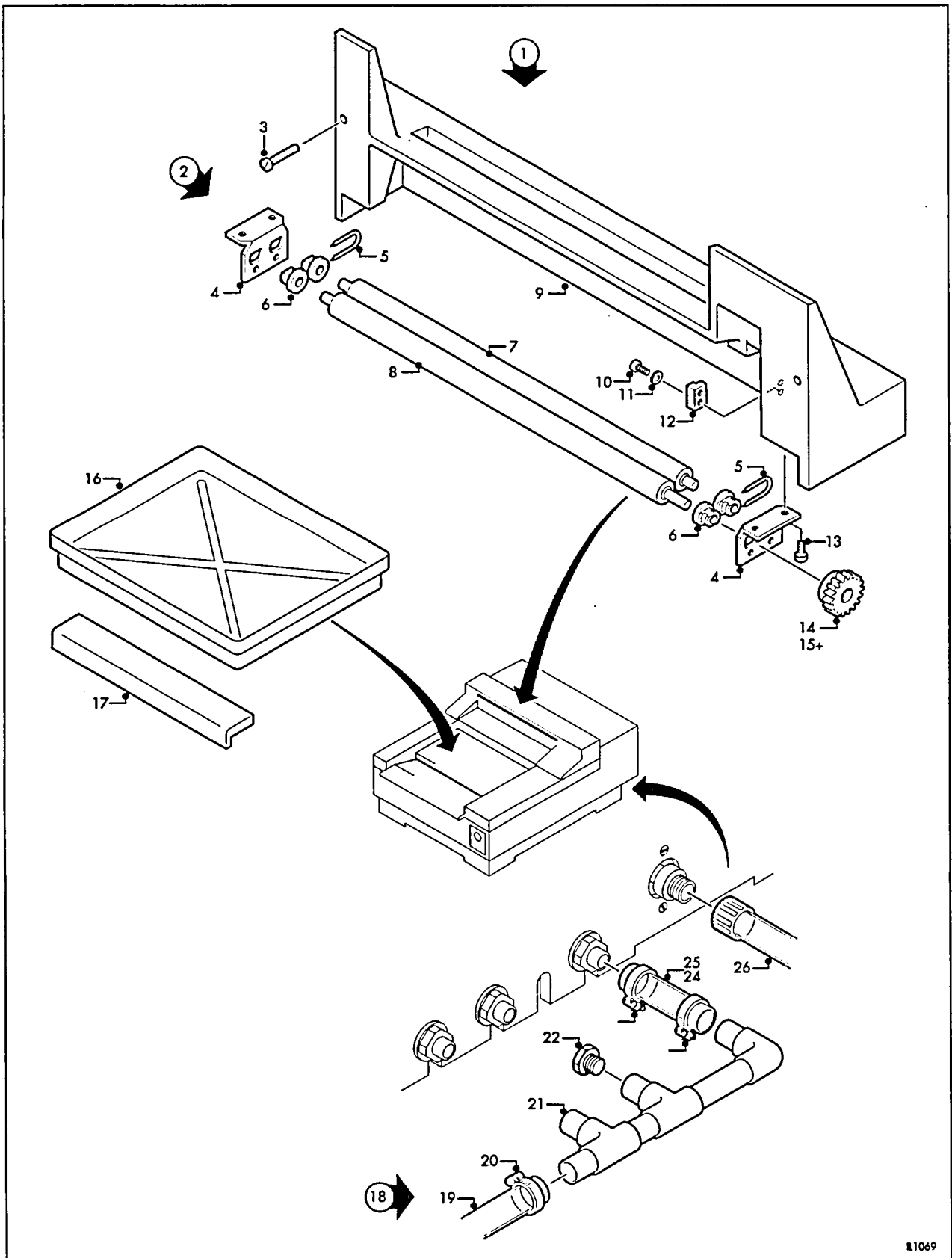
1.10 ILFOLAB 2150RC processor - electrical components

Ref no. fig 1.10	Part no.	GIN No.	Description	Quantity	Serial no.
1	6171-2-263	1571426	Component panel	1	
2	6171-P-024	1554896	PCB, relay, 240V (PCB1)	1	
3	6171-P-025		PCB, relay, 120V (PCB1)	1	
4	6171-P-023	1554878	PCB, CPU (PCB2)	1	
5	6171-3-026	1554959	Transformer assy (T1)	1	
6	89730467	1471498	Washer, M4, plain	14	
7	87990113		Screw, M4x10mm, phd	14	
8	89013028	1658149	Terminal block, 5-way (TBM2)	1	
9	6171-4-261		Insulator plate	1	
10	87990088		Screw, M3x16mm, phd	2	
11	89730466		Washer, M3, plain	2	
12	83421244	1702231	Fuseholder, 240V	1	
	83421244	1702231	Fuseholder, 120V	2	
13	83421245		Fuse, 10A, 240V (F3)	1	
14	83421246		Fuse, 20A, 120V (F3)	1	
15	83421240		Fuse, 1A, 120V (F4)	1	
16	81334736		Cable clip	5	
17	86204066	1471388	Nut, M4	5	
18	89730601	1473377	Washer, M4, sproof	4	
19	6171-4-274		Earth label	3	
20	6171-P-138		Base cover	1	
21	87560628		Solid state relay, 120V (SSR1, SSR2)	2	
22	6171-4-275		Heatsink, 120V	1	
23	6215-2-102		Panel, power input, 240V	1	
24	6215-2-103		Panel, power input, 120V	1	
25	86618532		Socket, 120V (SK1)	1	
26	86618545	1560558	Socket, 240V (SK1)	1	
27	86618547	1576465	Socket (SK2)	1	
28	86618566		Socket, power input (SK3)	1	
29+	86618567		Connector lock, use with item 28	1	
30	83421237	1554850	Fuseholder	2	
31	83421236	1554849	Fuse, 8A, 240V (F1, F2)	2	
32	83421243		Fuse, 15A - 120V (F1, F2)	2	
33	87988989		Screw, M4x8mm, phd	2	
34	87990649		Screw, M3x5mm, csk hd	4	
35	6171-4-252		Insulator plate	1	
36	89013027	1620795	Terminal block, 4-way (TBM1)	1	
37	86204065		Nut, M3	2	
38	6171-4-214	1555482	Knob, control	1	
39	81339515	1493700	Compression ring	1	
40	87988993		Screw, M4x20mm, phd	2	
41	87990084		Screw, M3x6mm, phd	2	
42	82956911	1603066	Mounting post, PCB	7	
43	6171-3-209		Control panel	1	
44	6171-4-210		Mounting plate	1	
45	6171-4-266		Distance piece	1	
46	6171-P-027	1554960	PCB, LED (PCB3)	1	
47	87998621	1493865	Switch, control (SW1)	1	
48	6171-4-022	1555125	Switch, water feed (SW10)	1	
49	6171-3-040		Panel, water feed	1	
50	83883509	1571822	Blind grommet	1	
51	6171-4-041	1555217	Reed switch (SW5)	1	
52	6171-3-344		Label, fuse, T-10A, 220/240V	1	
53	6171-3-345		Label, fuse, T-20A, 120V	1	

1.10 ILFOLAB 2150RC processor - electrical components

Ref no. fig 1.10	Part no.	GIN No.	Description	Quantity	Serial no.
54	6171-4-276		Heatsink, bracket, 120V	1	
55+	81335146	1835092	Mains lead, UK, 2.5m	1	
56+	81335145	1784897	Mains lead, USA, 2.5m	1	
57+	81335147	1835102	Mains lead, Europe, 2.5m	1	
58+	81335148	1835111	Mains lead, Australia, 2.5m	1	
59	83426513	1571822	Mains filter 220/240V	1	
60	6171-4-346		Fuse cover	1	

+ items not illustrated



11069

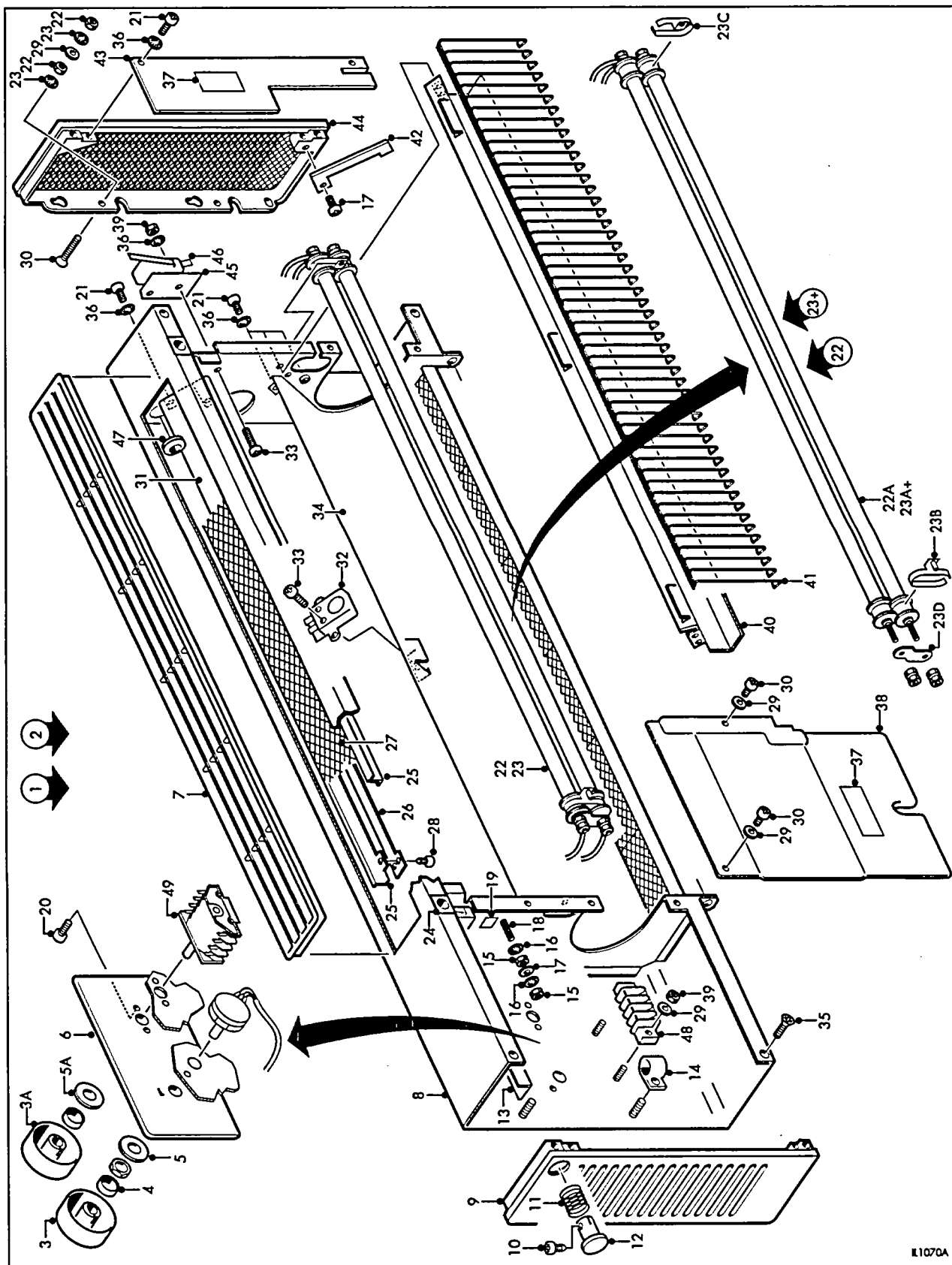
Figure 1.11

ILFOLAB 2150RC processor - optional equipment

1.11 ILFOLAB 2150RC processor - optional equipment

Ref no. fig 1.11	Part no.	GIN No.	Description	Quantity	Serial no.
1	6171-P-068	1572139	Print exit cover assy Comprises items 2, 16, 17	1	
2	6171-P-019	1572588	Nip housing assy Comprises items 3 to 15	1	
3	87989024		Screw, M6x35mm, phd	2	
4	6120-3-169	1492963	Bracket, roller assy	2	
5	6120-3-229	1492974	Roller tension spring	2	
6	6122-4-131	1494118	Bearing, roller	4	
7	6123-3-008	1494387	Roller assy, driven	1	
8	6123-3-007	1494378	Roller assy, drive	1	
9	6171-3-105	1571503	Nip housing	1	
10	87991649		Screw, No.4x ³ / ₈ inch, phd, stap	2	
11	89730466		Washer, M3, plain	2	
12	85657706	1493755	Magnet, actuator	1	
13	87993360		Screw, M6x10mm, hex hd	4	
14	6123-4-178	1537662	Gear, 40T	1	
15	87992012		Socket set screw, M4x6mm	1	
16	6121-2-116	1572579	Print receive dish	1	
17	6171-3-269	1572597	Dish support	1	
18	6171-4-073	1597374	Installation kit	1	from 2C52726
19	84254103		Flexible hose, 25mmx2m long	1	
20	84253116		Pipe clip, size 1, ss	1	
21	6171-2-051	1597356	Drain manifold, 3-way	1	from 2C52726
22	86620528		Plug, 1/2 inch BSP	1	
23	84253115		Pipe clip, size 1A, ss	6	from 2C52726
24	84254101		Flexible hose 19mm x 90mm long	3	from 2C52726
25+	84254101		Flexible hose 19mmx2m long (alt fix drain)	1	
26	6171-4-072	1597365	Water supply pipe	1	from 2C52726

+ items not illustrated



K1070A

Figure 1.12

ILFOLAB 2150RC dm - body upper

1.12 ILFOLAB 2150RC dm - body upper

Ref no. fig 1.12	Part no.	GIN No.	Description	Quantity	Serial no.
1	6213-P-501		ILFOLAB 2150RC dryer, module, 230V	1	
2	6213-P-500		ILFOLAB 2150RC dryer, module, 120V	1	
3	6123-4-497		Knob, temperature control	1	
3A	6123-4-470		Knob, range	1	
4	81339515		Compression ring	2	
5	89730471		Washer, plain	1	
5A	89730726		Washer, plain, 1.5 thick	1	
6	6123-3-251		Control panel	1	
7	6123-2-191		Air grille	2	
8	6123-P-071		Top cover sub assy	1	
9	6123-P-432		End cap upper lh sub assy	1	
10	87992637		Screw, M4x12mm, phd	2	
11	6123-4-121		Release button return spring	1	
12	6122-3-139		Release button	1	
13	6123-2-140		Locking bar	1	
14	81334756		P clip	1	
15	86203942		Nut, M4, brass	4	
16	89730601		Washer, M4, sproof	4	
17	89730445		Washer, M4, plain	6	
18	87989660		Screw, M4x20mm, phd	1	
19	6123-4-161		Earth label	1	
20	87992635		Screw, M4x8mm, phd	2	
21	87992607		Screw, M3x6mm, phd	17	
22	6123-3-538		Heater assy, 230V	1	
22A	6123-3-246		Heater, 375W - 230V (H1, H2)	2	
23+	6213-3-539		Heater assy, 120V	1	
23A+	6123-3-247		Heater, 375W - 120V (H1, H2)	2	
23B	6123-4-244		Heater clip, LH upper	1	
23C	6123-4-243		Heater clip, RH upper	1	
23D	6123-4-245		Strap, neutral	1	
24	6123-4-186		Locking pin bush	2	
25	6123-3-183		Air grille fixing plate	4	
26	6123-3-185		Air grille cable plate	1	
27	6123-3-184		Air grille mesh	2	
28	87991746		Screw, M3x6mm, stap phd	12	
29	89730466		Washer, M3, plain	5	
30	87990339		Screw, M4x16mm, csk hd	2	
31	6123-3-130		Upper deflector	1	
32	89014413		Thermal cutout (SW3)	1	
33	87992612		Screw, M3x20mm, phd	4	
34	6123-2-249		Fan air deflector	1	
35	87993024		Screw, M4x6mm, csk hd	4	
36	89730600		Washer, M3, sproof	22	
37	6200-3-108		Label, electrical hazard	2	
38	6213-2-221		Upper cover, lh	1	
39	86204065		Nut, M3	4	
40	6123-2-126		Upper reflector	1	
41	6123-2-240		Upper reflector guide	1	
42	6123-3-145		Restraining arm	1	
43	6123-3-146		Upper cover, rh	1	
44	6123-P-021		End cap, upper rh sub assy	1	
45	6123-4-143		Switch insulator plate	2	
46	6123-4-193		Microswitch (SW1,SW2)	2	
47	81334727		Open/close bush No. 2872, black	2	
48	89013016		Terminal block, 4 way (TB1)	1	
49	87998699		Switch, range (SW4)	1	
50+	87561019		Resistor, fan, 120V only (R1)	1	

+ items not illustrated

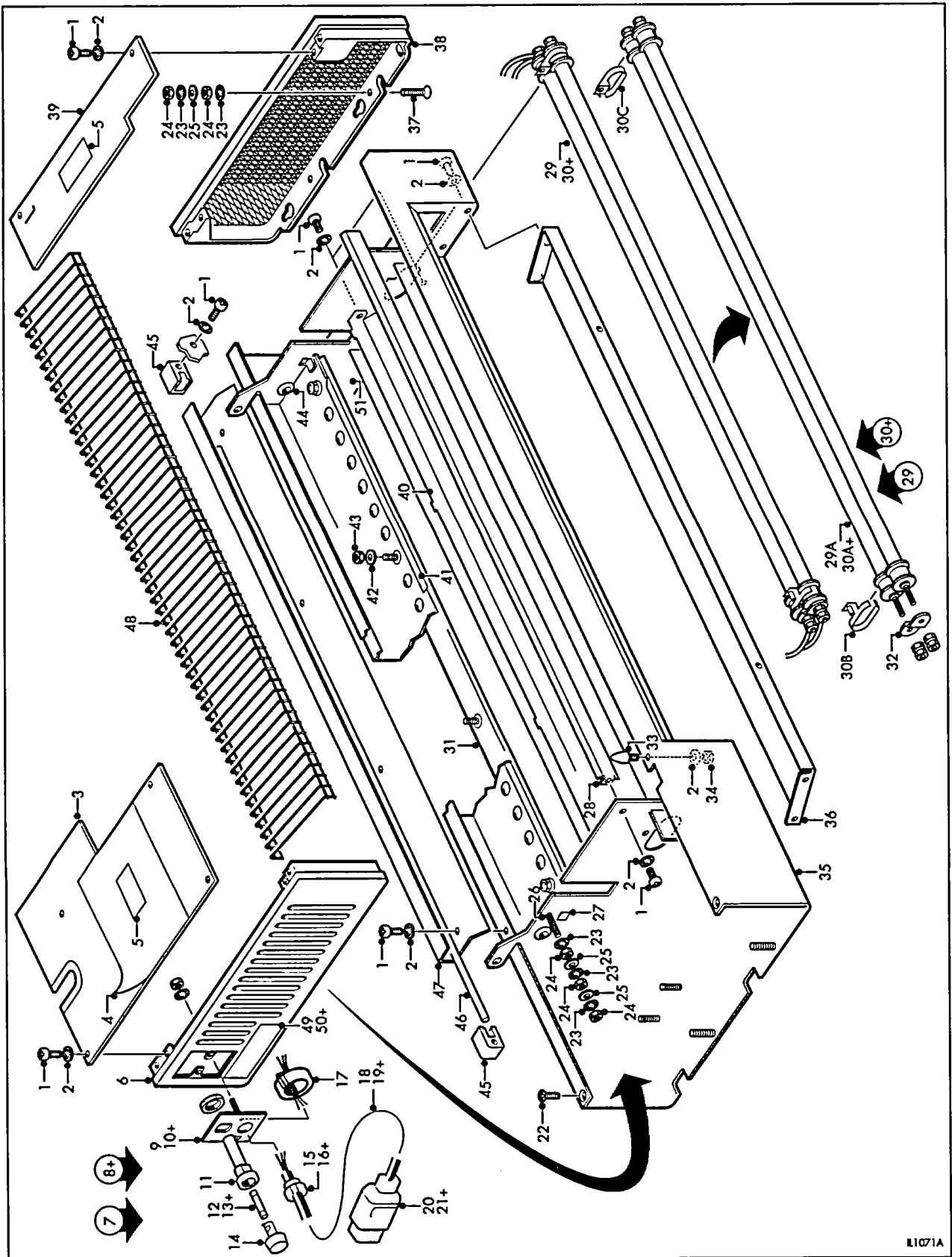


Figure 1.13

ILFOLAB 2150RC dm - body lower

1.13 ILFOLAB 2150RC dm - body lower

Ref no. fig 1.13	Part no.	GIN No.	Description	Quantity	Serial no.
1	87992607		Screw, M3x6mm, phd	21	
2	89730600		Washer, M3, sproof	20	
3	6123-2-222		Lower cover, lh	1	
4	6123-4-162		Caution label	1	
5	6200-3-108		Label, electrical hazard	2	
6	6123-P-022		End cap, lower lh sub assy	1	
7	6123-P-507		Supply cable assembly, 230V	1	
8+	6123-P-508		Comprises items 9,11,12,14,15,17,18,20,21 Supply cable assembly, 120V Comprises items 10,11,13,14,16,19	1	
9	6123-3-142		Mounting plate, 230V	1	
10+	6123-3-141		Mounting plate, 120V	1	
11	83421259		Fuseholder	1	
12	83421233		Fuse, 8A - 230V, fast blow, (F1)	1	
13+	83421217		Fuse, 15A - 120V, fast blow, (F1)	1	
14	83421260		Bayonet cap	1	
15	81334708		Stain relief bush, 230V	1	
16+	81334713		Stain relief bush, 120V	1	
18	6123-P-510		Supply cable, sub assembly, 230V	1	
19+	6123-P-521		Supply cable, sub assembly, 120V	1	
20	86618550		Plug, 230V only	1	
21+	852687403		Tape, colour code, 230V only	AR	
22	87993024		Screw, M4x6mm, csk hd	2	
23	89730601		Washer, M4, sproof	10	
24	86203942		Nut, M4, brass	10	
25	89730445		Washer, M4, plain	12	
26	87989660		Screw, M4x20mm, phd	1	
27	6123-4-161		Earth label	2	
28	6123-3-128		Heat deflector	1	
29	6213-3-536		Heater, assy 230V	1	
29A	6123-3-246		Heater, 375W - 230V (H3, H4)	2	
30+	6213-3-537		Heater, assy 120V	1	
30A	6123-3-247		Heater, 375W - 120V (H3, H4)	2	
30B	6123-4-242		Heater clip, LH lower	1	
30C	6123-4-241		Heater clip, RH lower	1	
30D	6123-4-245		Strap, neutral	1	
31	6123-3-472		Nip exit guide	1	
32	6123-4-245		Strap, neutral	1	
33	6122-4-138		Locking pin	2	
34	86204065		Nut, M3	2	
35	6123-P-070		Base cover assy	1	
36	6123-1-119		Drip tray	1	
37	87990339		Screw, M4x16mm, csk hd	3	
38	6123-P-023		End cap, lower rh sub assy	1	
39	6123-3-148		Lower cover, rh	1	
40	6123-2-127		Lower reflector assy	1	
41	6123-2-177		Liner plate	1	
42	6123-4-213		Washer, nip exit guide	4	
43	86204066		Nut, M4	4	
44	83883507		Grommet	2	
45	6122-3-113		Hinge pin cap	2	
46	6123-4-109		Hinge pin	1	
47	6123-3-112		Hinge pin cover	1	
48	6123-2-134		Lower reflector guide	1	
49	6123-4-459		Rating label, 230V	1	
50+	6123-4-467		Rating label, 120V	1	

+ items not illustrated

1.13 ILFOLAB 2150RC dm - body lower

Ref no. fig 1.13	Part no.	GIN No.	Description	Quantity	Serial no.
51	6123-3-646		Exit side cheek, rh	1	
52	6123-3-639		Exit side cheek, lh	1	
53+	6123-P-512		Kit, dryer module, 230V	1	
54+	6123-P-511		Kit, dryer module, 120V	1	
			Comprises the following items:		
	83421233		Fuse, 8A - 230V, (F1)	1	
	83421217		Fuse, 15A - 120V, (F1)	1	
	6123-4-649	160426	Dryer mounting screw	2	
	6123-3-114		Roller tension spring	2	
	6123-4-179		Bearing	4	

+ items not illustrated

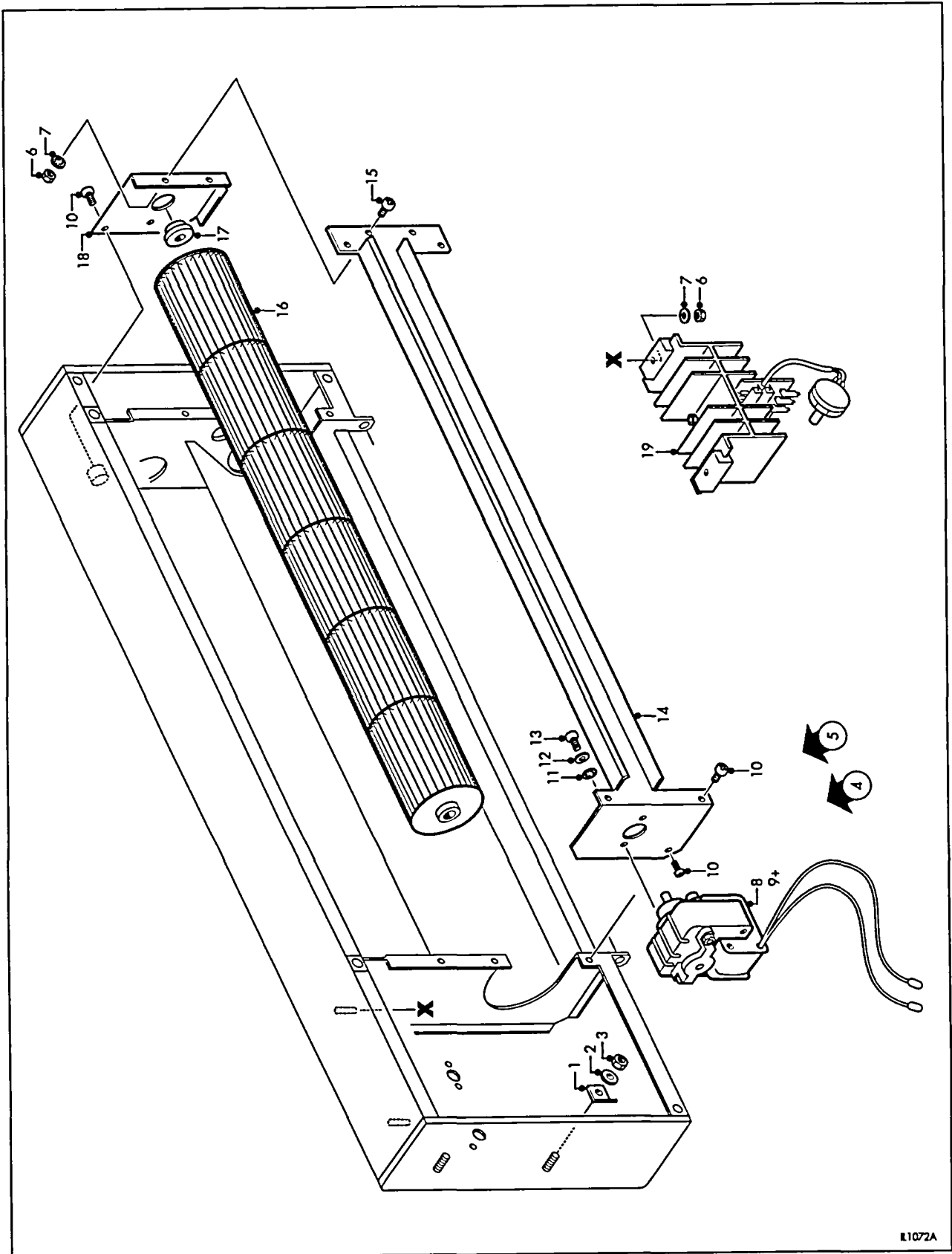


Figure 1.14

ILFOLAB 2150RC dm top - moving parts

1.14 ILFOLAB 2150RC dm top - moving parts

Ref no. fig 1.14	Part no.	GIN No.	Description	Quantity	Serial no.
1	6122-4-161		Earth connector spring plate	2	
2	89730707		Washer, M6, plain	2	
3	86204068		Nut, M6	2	
4	6216-P-009		Fan assy, 230V 50Hz	1	
5	6218-P-009		Fan assy, 120V 60Hz	1	
6	86204065		Nut, M3	4	
7	89730600		Washer, M3, sproof	4	
8*	6126-3-010		Fan motor and cable assy, 230V (M1)	1	
9*	6128-3-010		Fan motor and cable assy, 120V (M1)	1	
10*	87992607		Screw, M3x6mm, phd	7	
11*	89730717		Washer, M3.5, sproof	2	
12*	89730705		Washer, M3.5, plain	2	
13*	87991753		Screw, M3.5x8mm, phd, stap	2	
14*	6123-2-122		Mounting bracket, fan	2	
15*	87992608		Screw, M3x8mm, phd	2	
16*	6123-4-218		Fan rotor	1	
17*	83419209		Bearing, fan	1	
18*	6123-3-118		Fan mounting bracket, rh	1	
19	6123-3-019		Heater control and potentiometer (P1)	1	

+ items not illustrated

* These items are not available as spare parts. Items 4 and 5 are supplied as complete assemblies to ensure correct fan balancing

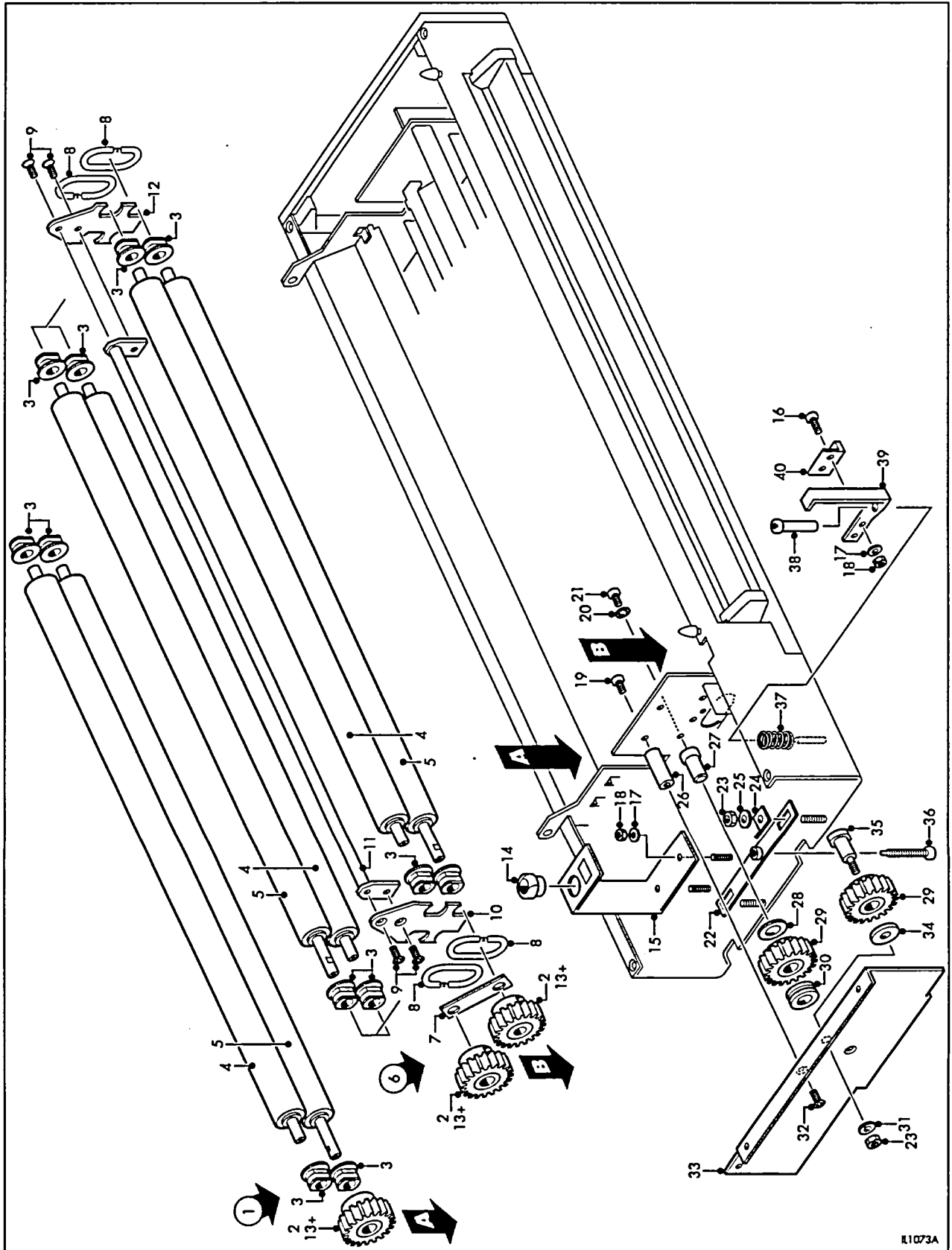


Figure 1.15

ILFOLAB 2150RC dm lower - moving parts

R1073A

1.15 ILFOLAB 2150RC dm lower - moving parts

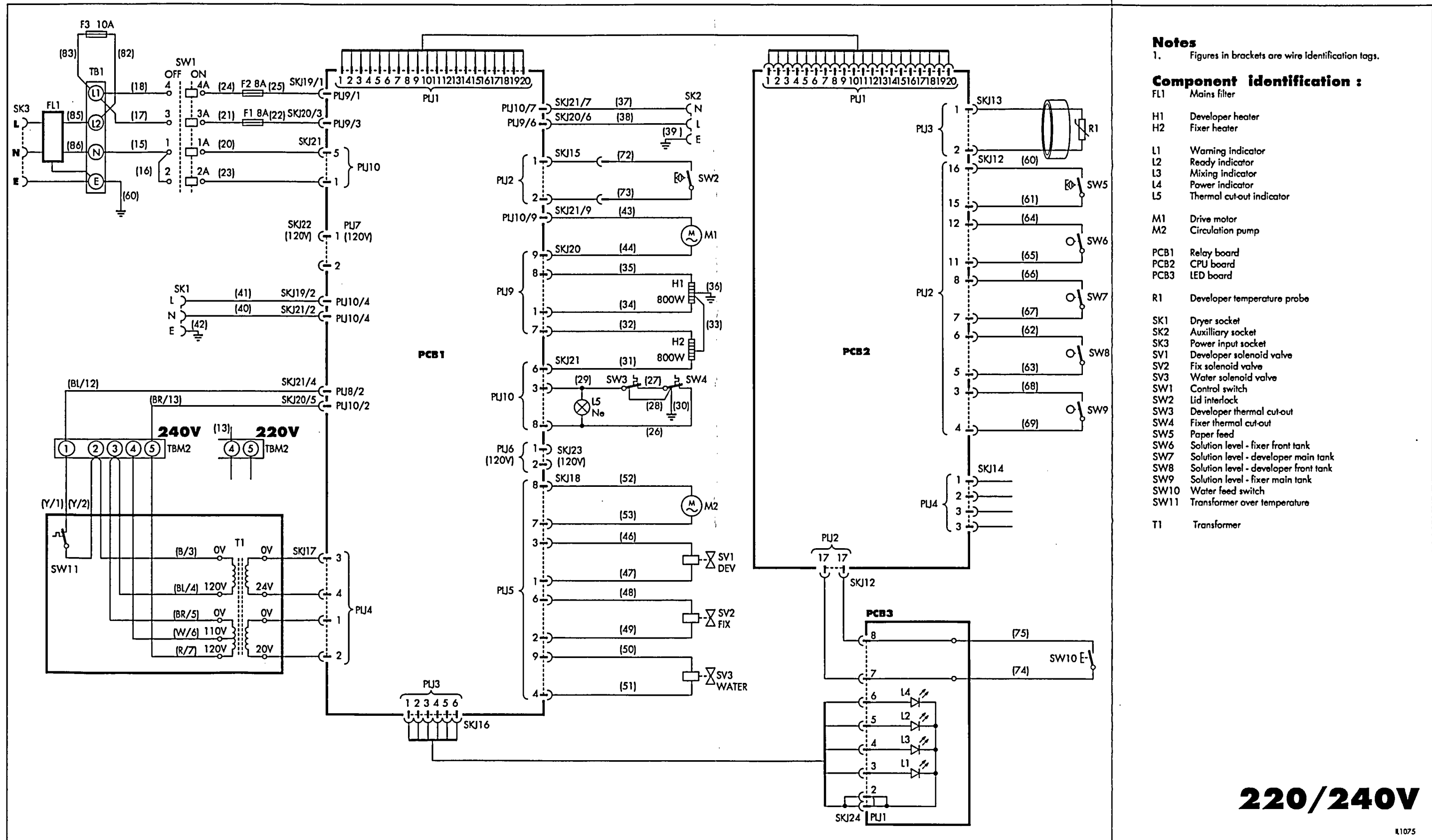
Ref no. fig 1.15	Part no.	GIN No.	Description	Quantity	Serial no.
1	6123-P-056		Output drive roller assy	1	
2	6123-P-178		Gear, 40T	3	
3	6123-4-179		Bearing, roller	3	
4	6123-P-008		Driven roller assy	1	
5	6123-P-007		Roller, drive	3	
6	6123-P-057		Front roller unit assy	1	
7	6123-4-182		Locating plate	1	
8	6123-3-114		Roller tension spring	4	
9	87992997		Screw, M3x6mm, csk hd	4	
10	6123-3-180		Side plate, lh	1	
11	6123-P-055		Torque rod assy	1	
12	6123-3-181		Side plate, rh	1	
13+	87993146		Socket set screw, M4x10mm	3	
14	81334753		Strain relief bush	1	
15	6216-3-152		Cable support bracket	1	
16	87992609		Screw, M3x10mm, phd	2	
17	89730466		Washer, M3, plain	2	
18	86204065		Nut, M3	2	
19	87992634		Screw, M4x6mm, phd	2	
20	89730600		Washer, M3, sproof	1	
21	87992607		Screw, M3x6mm, phd	1	
22	6123-4-636		Retaining plate	2	
23	86204068		Nut, M6	4	
24	6122-4-161		Earth connector spring plate	2	
25	89730707		Washer, M6, plain	4	
26	6122-4-118		Spacer	2	
27	6122-3-119		Idler gear spigot	1	
28	89730711		Washer, nylon	1	
29	6122-3-114		Gear, 40T idler	1	
30	89730724		Washer, nylon	1	
31	89730476		Washer, M6, spring	1	
32	87993024		Screw, M4x6mm, csk hd	2	
33	6123-2-220		Motor mounting plate	1	
34	89730723		Washer, nylon	1	
35	6123-4-223		Idler gear spigot	1	
36	6123-4-649		Screw, dryer mounting	2	
37	87995612		Compression spring	1	
38	6123-4-653		Stud extension nut	1	
39	6123-3-144		Bracket, reed actuator magnet	1	
40	85657706		Actuator magnet	1	

+ items not illustrated

2

ELECTRICAL

Figure	Description	
2.1	ILFOLAB 2150RC - processor component layout	41
2.2	ILFOLAB 2150RC - processor circuit diagram 220/240V	42
2.3	ILFOLAB 2150RC - processor circuit diagram 120V	43
2.4	ILFOLAB 2150RC - dryer module component layout/circuit diagram	44

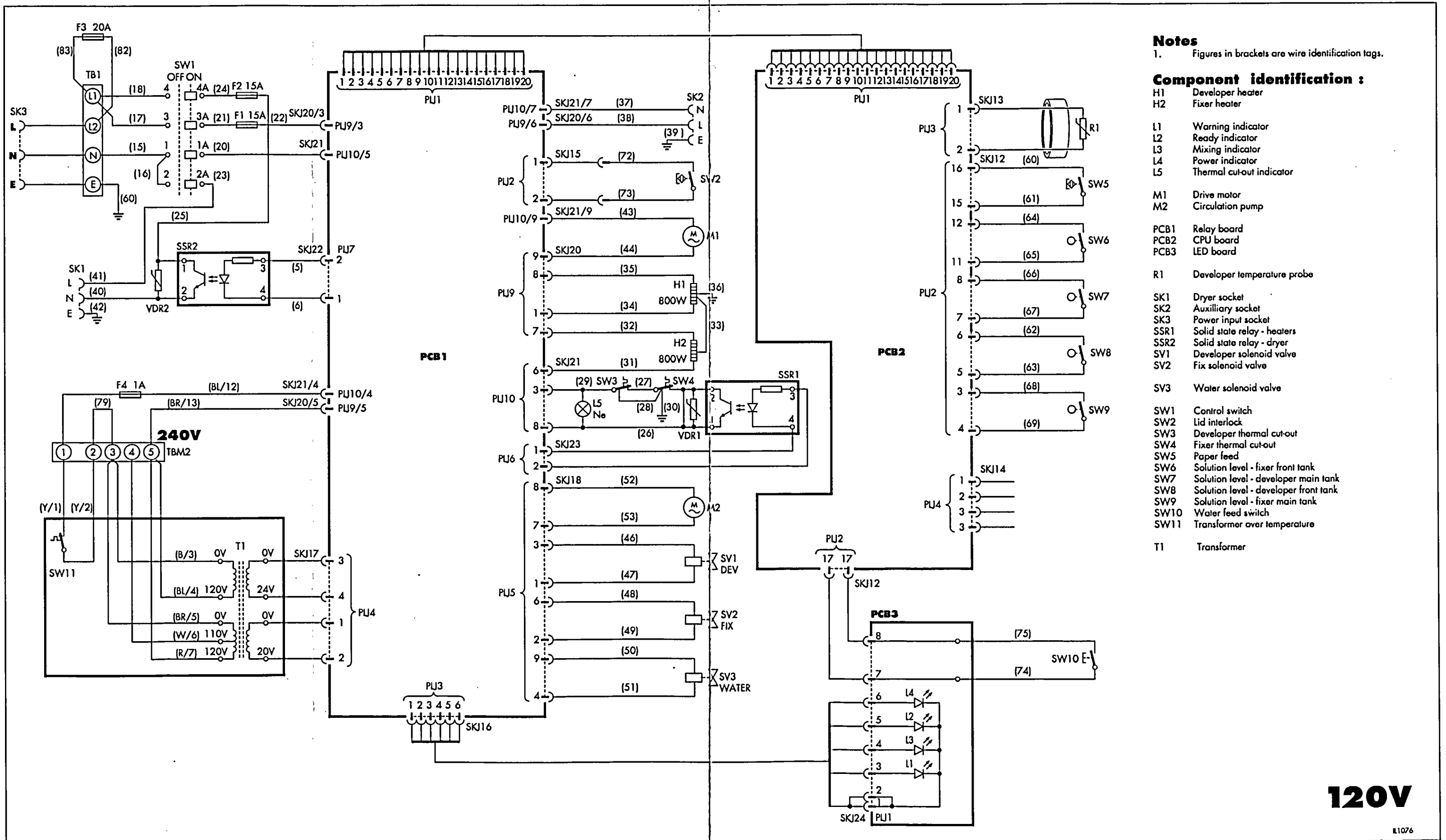


- Notes**
 1. Figures in brackets are wire identification tags.
- Component identification :**
- FL1 Mains filter
 - H1 Developer heater
 - H2 Fixer heater
 - L1 Warning indicator
 - L2 Ready indicator
 - L3 Mixing indicator
 - L4 Power indicator
 - L5 Thermal cut-out indicator
 - M1 Drive motor
 - M2 Circulation pump
 - PCB1 Relay board
 - PCB2 CPU board
 - PCB3 LED board
 - R1 Developer temperature probe
 - SK1 Dryer socket
 - SK2 Auxilliary socket
 - SK3 Power input socket
 - SV1 Developer solenoid valve
 - SV2 Fix solenoid valve
 - SV3 Water solenoid valve
 - SW1 Control switch
 - SW2 Lid interlock
 - SW3 Developer thermal cut-out
 - SW4 Fixer thermal cut-out
 - SW5 Paper feed
 - SW6 Solution level - fixer front tank
 - SW7 Solution level - developer main tank
 - SW8 Solution level - developer front tank
 - SW9 Solution level - fixer main tank
 - SW10 Water feed switch
 - SW11 Transformer over temperature
 - T1 Transformer

220/240V

11075

Figure 2.2 ILFOLAB 2150RC - processor circuit diagram 220/240V



Notes

1. Figures in brackets are wire identification tags.

Component identification :

- H1 Developer heater
- H2 Fixer heater
- L1 Warning indicator
- L2 Ready indicator
- L3 Mixing indicator
- L4 Power indicator
- L5 Thermal cut-out indicator
- M1 Drive motor
- M2 Circulation pump
- PCB1 Relay board
- PCB2 CPU board
- PCB3 LED board
- R1 Developer temperature probe
- SK1 Dryer socket
- SK2 Auxiliary socket
- SK3 Power input socket
- SSR1 Solid state relay - heaters
- SSR2 Solid state relay - dryer
- SV1 Developer solenoid valve
- SV2 Fix solenoid valve
- SV3 Water solenoid valve
- SW1 Control switch
- SW2 Lid interlock
- SW3 Developer thermal cut-out
- SW4 Fixer thermal cut-out
- SW5 Paper feed
- SW6 Solution level - fixer front tank
- SW7 Solution level - developer main tank
- SW8 Solution level - developer front tank
- SW9 Solution level - fixer main tank
- SW10 Water feed switch
- SW11 Transformer over temperature
- T1 Transformer

120V

K1076

Figure 2.3

ILFOLAB 2150RC - processor circuit diagram 120V

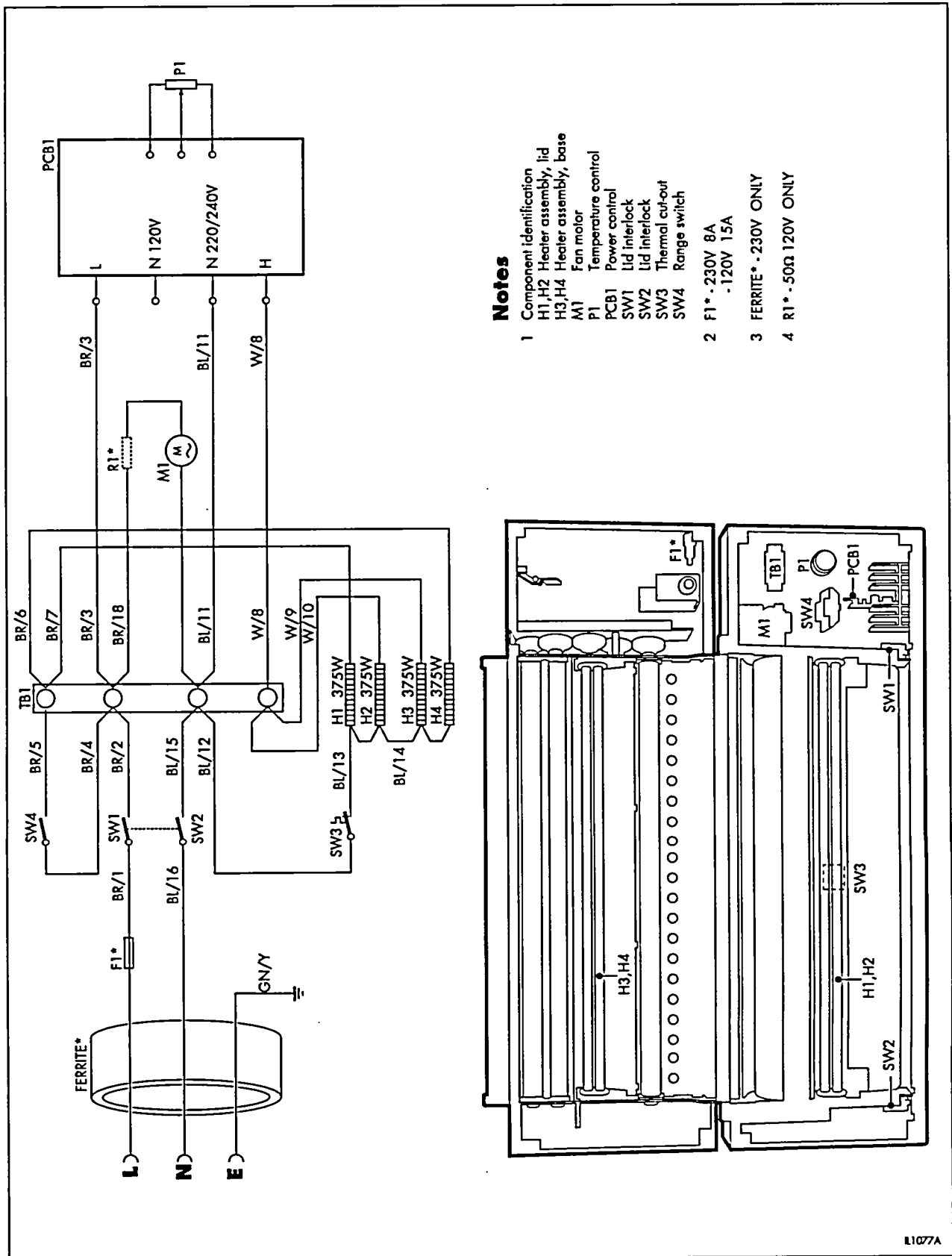


Figure 2.4

ILFOLAB 2150RC - dryer module component layout/circuit diagram

Australia

ILFORD Anitec Pty Ltd
 PO Box 144
 Mt Waverley
 Victoria 3149

Benelux

ILFORD Anitec Nederland BV
 Nieuwenhuizenweg 10
 Postbus 1125
 NL-2302 BC Leiden

Canada

ILFORD Anitec (Canada) Limited
 2751 John Street
 Markham
 Ontario L3R 2Y8

Denmark

ILFORD Anitec A/S
 Gadelandet 18
 DK-2700 Brønshøj

Finland

ILFORD Anitec Oy
 Hakamäenkuja 8
 SF-01510 Vantaa

France

ILFORD Anitec SA
 Cité Descartes
 14 Rue Galilée
 F-77420 Champs-sur-Marne

Germany/Austria

ILFORD PHOTO GmbH
 Postfach 10 11 68
 D-63265 Dreieich

Italy

ILFORD Anitec SpA
 Origgio (Va)
 Casella Postale 77
 I-21047 Saronno

Spain

ILFORD Anitec Iberica SA
 C/Monturiol 13
 E-08918 Badalona
 Barcelona

Sweden

ILFORD Anitec AB
 PO Box 55066
 S-400 53 Göteborg

Switzerland

ILFORD Anitec AG/SA
 Rue de l'Industrie 15
 CH-1700 Fribourg 5

United Kingdom

Sales and Marketing UK
 ILFORD Limited
 Town Lane
 Mobberley
 Cheshire WA16 7JL

USA

ILFORD PHOTO USA
 West 70 Century Road
 PO Box 288
 Paramus
 New Jersey 07653

If your country is not shown here, please contact:

Export Eastern Hemisphere
 ILFORD Limited
 Mobberley
 Cheshire WA16 7JL
 England
 Web
<http://www.ilford.com>

Constant improvements in ILFORD products mean that changes in design or specification may occur from time to time. Any improvements will, however, maintain conformance of the product with all relevant legislation. The right to alter the design and specification of the equipment without prior notice is accordingly reserved.

Product names printed in capitals are ILFORD trade marks.
 ILFORD Limited Mobberley Cheshire

Dave

01438 - 434 - 531